



Celebrating 70 years of international cooperation to build a more sustainable world







**CIB**

International Council for Research and  
Innovation in Building and Construction

**Making a difference  
since 1953**



## // CONTENTS

Contents	3
Foreword	4
Introduction	5
CIB's history	6
Reflections	20
Dr Keith Hampson, CIB Immediate Past President	20
Professor Peter Barrett, CIB Past President 2007–2010	22
Professor Billy Hare, Co-Coordinator CIB W099	23
CIB's present and future	24
Mark Hastak, CIB President	24
Don Ward, CIB Chief Executive	26
Messages of support	28
Coordinators	28
Student Chapters	31
External organisations	32
CIB Board members	33
CIB Membership	34

## // FOREWORD

It is a great honor to be the 26th President of the CIB as we celebrate our 70th anniversary year. On behalf of our members, including the Board, Committees, Working Commissions, Task Groups and Student Chapters, I warmly welcome you to this Commemorative Review.

I express my sincere appreciation to Prof. Billy Hare from Glasgow Caledonian University for compiling this commemorative brochure, and my gratitude to our team at CIB headquarters for producing it and supporting many activities to raise awareness of CIB around the world.

Looking back, it is clear that CIB has faced many challenges as an organisation in the context of the changing world around us and we have evolved to overcome these and to remain a truly global organisation. We thank our committed membership for their dedication to CIB and for their endeavours in creating and promoting new knowledge in the built environment. It is by serving CIB on Boards, Committees Commissions and Task Groups, as well as bringing their knowledge, experience, and research under the CIB umbrella, that they have made it the organisation it is today. To continue this evolution we need to pursue and facilitate multidisciplinary collaboration to have a positive impact and affect change in the world.

It is only through meeting the needs of our membership and demonstrating the value of being part of the CIB family that we will address the future challenges while growing CIB's profile and influence at the same time. I am sure that by encouraging broader membership, fostering diversity, and promoting equity amongst our membership, we will create a sustainable and prosperous CIB.

Thank you for your support in fostering the future of CIB as a truly global think tank in the built environment. I look forward to meeting and working with all existing and new members across the globe as we celebrate the 70th anniversary of the foundation of CIB.

**Professor Makarand (Mark) Hastak**  
CIB President



## // INTRODUCTION

In 2023-24 CIB celebrated its 70th 'Platinum' anniversary. This was marked at many events held during the year, and supplemented with online content.

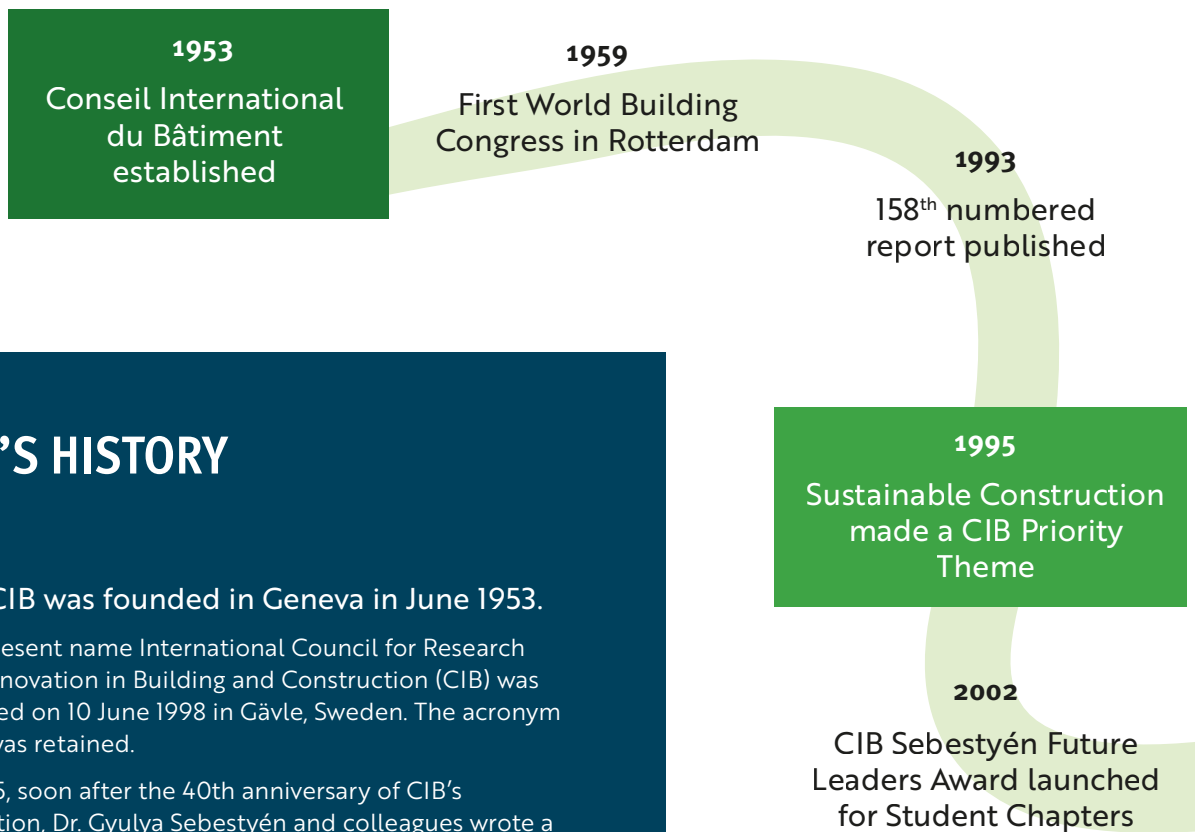
This is an important milestone in the organisation's history, and this commemorative review looks back on 70 years of international cooperation, and forward, as CIB members help to build a more sustainable world.

The following pages contain interesting and thought-provoking articles and interviews, exploring aspects of the CIB and its impact on the built environment over the last 70 years and into the future. We hope you enjoy this commemoration.



W099 & W123 International Conference,  
University of Porto, Portugal: 21–22 June 2023





## // CIB'S HISTORY

The CIB was founded in Geneva in June 1953.

The present name International Council for Research and Innovation in Building and Construction (CIB) was adopted on 10 June 1998 in Gävle, Sweden. The acronym 'CIB' was retained.

In 1995, soon after the 40th anniversary of CIB's formation, Dr. Gyulya Sebestyén and colleagues wrote a comprehensive history of the organisation to that point<sup>1</sup>. This is summarised below, and content has been added to bring the history up to date.

## EIGHT DECADES OF CIB

The history of CIB has evolved over eight decades as follows:

### The Fifties

36 institutes come together to establish CIB which then embarks on post-war development.

### The Sixties

CIB activities progress, with a first peak in the number of Members (215). CIB is ambitious to assist the building industry to satisfy high demand.

### The Seventies

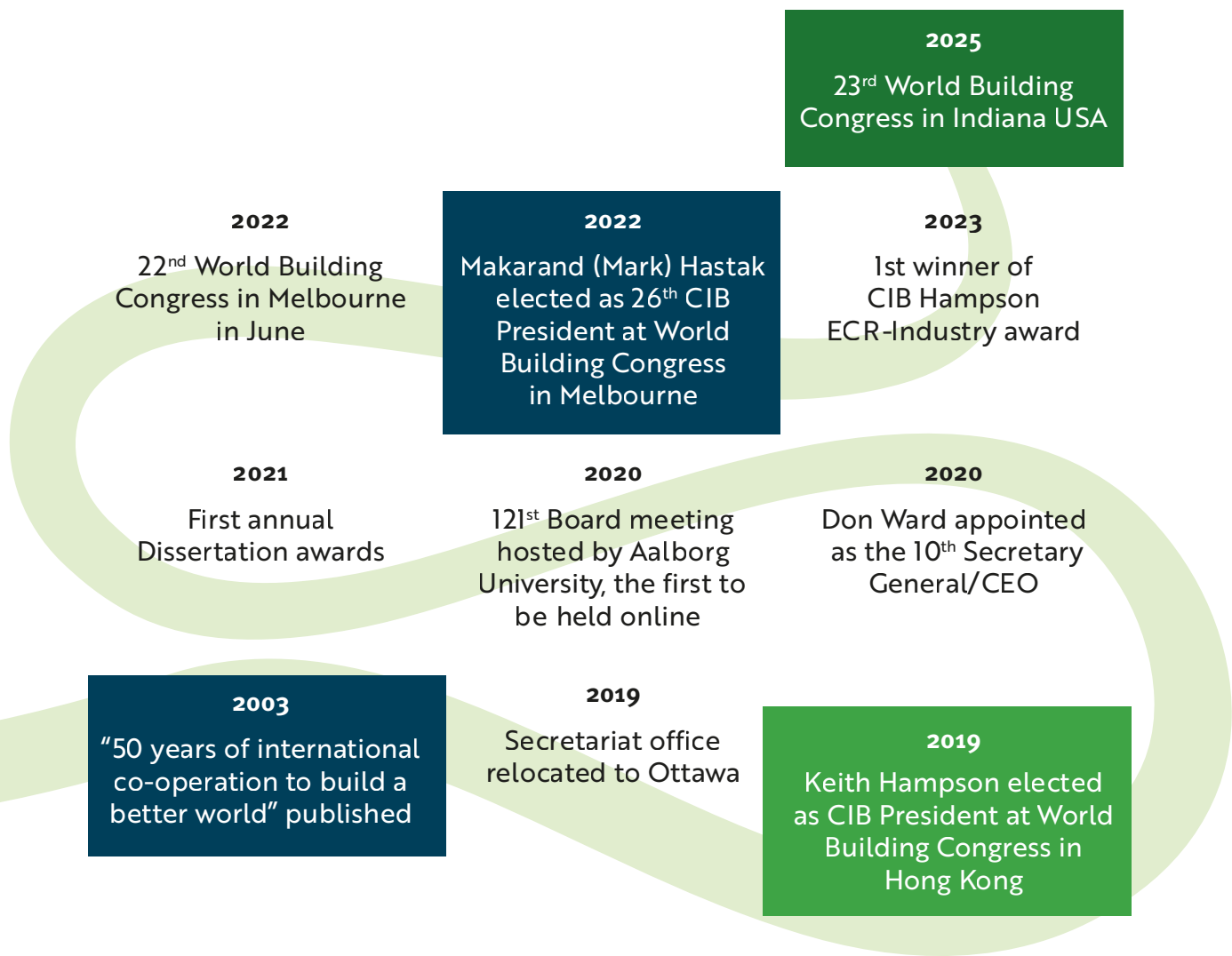
The oil crisis exerts a downward pressure on the demand for new houses and buildings. CIB membership falls back to 179.

### The Eighties

Building research gradually adjusts to the changing conditions, staff numbers in large research institutes are reduced but CIB expands with membership exceeding 450.

<sup>1</sup> <https://cibworld.org/the-history-of-cib/>





## The Nineties

CIB carries out internal reforms in order to respond effectively to new requirements from industry including problems of management, maintenance, quality, environmental and sustainable development.

## The New Millennium (Noughties)

There is a decline in national research funding which impacts CIB membership. CIB Student Chapters are established, as are Priority themes including Sustainable Construction.

## The Teens

The scope of CIB Commissions extends to topics such as organisation and management, economics of building, legal and procurement practices, architecture, urban planning and human aspects. Membership comprises 95 organisations with around 3000 individual experts.

## The Twenties

CIB secretariat moves from Europe to Ottawa, Canada, just as a global pandemic takes hold and results in the office closure, but digital technology allows CIB to continue to operate efficiently. a new Early Career Researcher network is created, and virtual conferences proliferate.



## THE BEGINNINGS OF CIB

The challenge of rebuilding Europe after the Second World War provided the impetus to promote international cooperation in the field of building documentation and, later, building studies and research. The United Nations Economic Commission for Europe (UNECE) Housing Committee was set up to address these issues, and it established the International Council for Building Documentation (Conseil International de Documentation du Bâtiment, CIDB).

In November 1950 the Conference of Building Research in Geneva agreed there was clear evidence of the value of international collaboration in research, and a report in September 1952, recommended that the CIDB should be transformed into a body dealing with three main fields of activity:

- ▶ experimental research
- ▶ studies and the application of the results of research,
- ▶ documentation.

Thus, the CIB was born and held its first General Assembly in June 1953 in Geneva with Andre Marini from CSTB in France as its first President.

### The twelve founding members of CIB

- ▶ Dokumentationszentrum für Technik und Wirtschaft, Austria
- ▶ Centre Belge de Documentation et d'Information de la Construction, Belgique
- ▶ Statens Byggeforskningsinstitut, Denmark
- ▶ Asuntotutkimustoimikunta, Finland
- ▶ Centre Scientifique et Technique de Bâtiment, France
- ▶ Institut für Bauforschung e. V., Hannover, Germany
- ▶ Comitato Nazionale per l'Abitazione, Italy
- ▶ Bouwcentrum, Nederland
- ▶ Norges Byggeforskningsinstitut, Norway
- ▶ Statens Nämnd för Byggnadsforskning, Sweden
- ▶ Building Research Station, Department of Scientific and Industrial Research, UK



John McCarthy, CIB President 2010–2013 with Wim Bakens, Secretary General 1994–2017



## The nature, objectives and functions of CIB

The effective and efficient rebuilding of Europe was implicit in the original role of CIB. International co-operation was regarded as an instrument for promoting more rapid and cheaper construction.

Over the decades that followed, CIB embraced its purpose to create a favourable cooperative environment for its members, to their mutual benefit. These cooperative activities included:

- ▶ research and studies
- ▶ conferences, symposia
- ▶ interaction with other relevant international organisations
- ▶ members' services including information exchange.

By the 1980s, the CIB focus had firmly become 'building research', with Working Commissions undertaking activities centred around knowledge sharing, conferences and symposia.

A review by Professor P. Lansley in the 1990s identified threats to the future existence of CIB, including from other stand-alone networks focussed on particular issues. The response was to enhance the value of the Working Commissions and the quality of their outputs. The Programme Committee was established, and the main role of this remains to provide assurance that all CIB's technical activities are of high quality and that Commissions are conducting worthwhile work programmes in an effective way. In addition, there is an important supporting role of stimulating and assisting new activities that will serve CIB members and enhance the international standing of members and CIB.



Delegates at CIB World Building Congress 2019 Hong Kong





## Fields of activity

The first topics addressed in CIB were: modular coordination; terminology/classification; users' needs; use of new building materials/technological development of the building industry. In 1956, seven topics were defined:

1	The impact on costs of height and of the number of floors in a block of flats.
2	Determination of temporary loads in residential buildings.
3	Study of a harmonised code on reinforced concrete structures in residential buildings.
4	Efficiency of standardisation and its impact on costs of residential buildings.
5	Study of measures to modernise building operatives.
6	Study of methods on the needs and wishes of the population concerning housing.
7	Study of efforts to modernise rural housing.

These topic areas evolved over the decades, and CIB's Working Commissions and Task Groups are the core of our work. A Working Commission is a worldwide network of experts in a defined scientific area who meet regularly and who collaborate in international projects and exchange information on a voluntary basis, whilst our Task Groups have a more limited lifetime, scope and objectives.



As of January 2024 there are 35 Working Commissions and six CIB Task Groups.

## Working Commissions

W014	Fire Safety	W101	Spatial Planning and Infrastructure Development
W023	Wall Structures	W102	Information and Knowledge Management in Building
W040	Heat and Moisture transfer in Buildings	W104	Open Building Implementation
W055	Construction Industry Economics	W107	Construction in Developing Countries
W056	Sandwich Panels (joint-CIB-ECCS Commission)	W110	Informal Settlements and Affordable Housing
W062	Water Supply and Drainage	W111	Usability of Workplaces
W065	Organisation and Management of Construction	W112	Culture in Construction
W069	Residential Studies	W113	Law and Dispute Resolution
W070	Facilities Management and Maintenance	W115	Construction Materials Stewardship
W078	Information Technology for Construction	W116	Smart and Sustainable Built Environments
W080	Prediction of Service Life of Building Materials and Components	W117	Performance Measurement in Construction
W083	Roofing Materials and Systems (also RILEM RMS)	W118	Clients and Users in Construction
W086	Building Pathology	W119	Customised Industrial Construction
W089	Education in the Built Environment	W120	Disasters and the Built Environment
W092	Procurement Systems	W121	Offsite Construction
W096	Architectural Design and Management	W122	Public Private Partnership
W098	Intelligent and Responsive Buildings	W123	People in Construction
W099	Safety Health & Wellbeing in Construction		

## CIB Task Groups

TG81	Global Construction Data	TG97	Nature-Based Solutions for Climate Resilient Buildings and Communities
TG88	Smart Cities	TG124	Net Zero Carbon Building Design and Construction Practices
TG91	Infrastructure		
TG96	Accelerating Innovation in Construction		



## Events and Publications

CIB events and publications are commonly products of its Commissions or proceedings of important CIB events.

CIB’s flagship event is the World Building Congress<sup>2</sup>, held every three years since the first one in Rotterdam in 1959, with proceedings published for each, available via the CIB secretariat and ICONDA® CIBlibrary<sup>3</sup>.

### CIB World Building Congresses

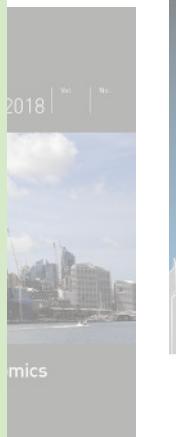
1	1959	Rotterdam	Netherlands	13	1995	Amsterdam	Netherlands
2	1962	Cambridge	UK	14	1998	Gävle	Sweden
3	1965	Copenhagen	Denmark	15	2001	Wellington	New Zealand
4	1968	Ottawa/Washington DC	Canada/USA	16	2004	Toronto	Canada
5	1971	Paris/Versailles	France	17	2007	Cape Town	South Africa
6	1974	Budapest	Hungary	18	2010	Salford	UK
7	1977	Edinburgh	UK	19	2013	Brisbane	Australia
8	1980	Oslo	Norway	20	2016	Tampere	Finland
9	1983	Stockholm	Sweden	21	2019	Hong Kong	China
10	1986	Washington DC	USA	22	2022	Melbourne	Australia
11	1989	Paris	France	23	2025	Purdue	USA
12	1992	Montreal	Canada				

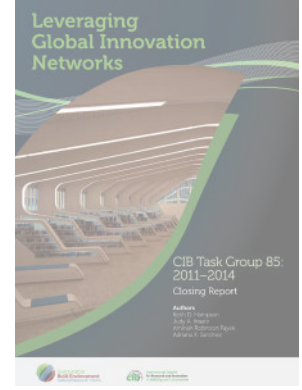
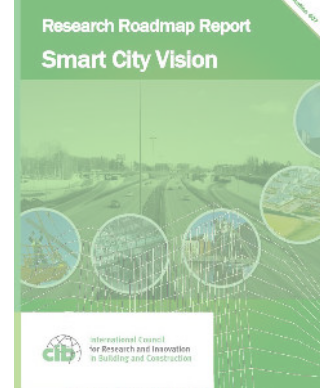
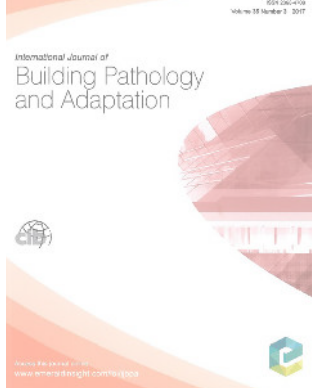
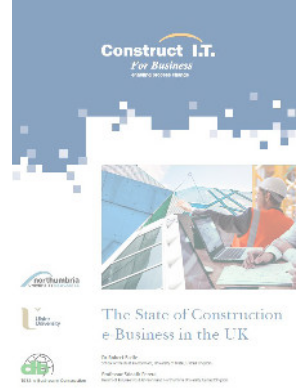
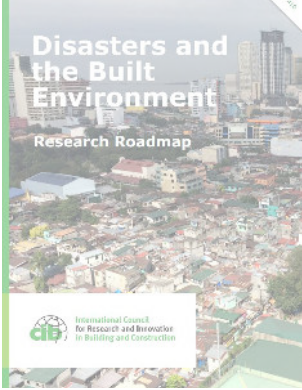


Wim Bakens with CIB members

<sup>2</sup> <https://cibworld.org/world-building-congress/>

<sup>3</sup> <http://www.irb.fraunhofer.de/CIBlibrary/about>





Many CIB Publications and Symposium Proceedings featured influential research, for example:

CIB W60 'The Performance Concept and its Terminology' (CIB Report 32; 1975) helped the performance concept to become universally accepted in the preparation of codes, standards and briefs.

- ▶ W24 'Dimensional and Modular Co-ordination' worked in cooperation with the International Modular Group (IMG), and also with CIB Commissions on joints, tolerances and measurements (W49, W50). A significant outcome was international agreements including ISO Standards on modular coordination.
- ▶ The work of W9 resulted in the Joint Committee on Structural Safety (JCSS) sponsored by CEB/CECM/CIB/FIP/IABSE and RILEM and still highly active today, 50 years on<sup>4</sup>.
- ▶ The results of W80's work have been used in ISO standardisation work
- ▶ 1954 saw the introduction of the CIB Bulletin featuring reports on CIB activities, progress in CIB Commissions, the work of CIB Members and other international organisations. In 1968 this became a printed monthly Newsletter, which evolved in the digital age to instant updates of news on the CIB website which are collated monthly as a digital newsletter<sup>5</sup>.

In 1968 a printed Journal was launched in English and French entitled 'Build International'/'Bâtiment International', which continued until 1990, after which it became Building Research & Information<sup>6</sup> and is still published independently of (but encouraged by) CIB. The trend of 'CIB-encouraged' scientific journals became popular and others soon followed suit, with their Editors often being from the CIB membership. In 2023 there are three Recognised journals and 29 Encouraged journals<sup>7</sup>.

## Relations with other international organisations

Having been established on the initiative of UN bodies, CIB had always has a special relationship with the United Nations and specifically with UN ECOSOC, UN Regional Economic Commissions (ECA, ECE, ECLA, ESCWA, ESCAP) and UNCHS. The Constitution of CIB even refers to this special relationship. CIB Board Meetings have been held twice in Nairobi at the Headquarters of UNCHS, CIB Congresses frequently had the honour of Welcome Addresses by high-ranking UN Officials, and many meetings were held with the participation of UN and CIB Officers.

CIB has formal cooperation agreements with ISO and CEN and is a member of the sectoral committees ISO/TAG8 and CEN/BTS1. Its relations with the European Union are also significant, With CIB Commissions having a prominent role in the preparation of some Eurocodes. The major international civil engineering organisations established a Liaison Committee 50 years ago of which CIB is a Member, and from time to time has provided the Presidency or the Secretary. Membership of this Committee has enabled amicable cooperation and joint actions with the other Associations (ECCS, FIB, IABSE, IASS and RILEM), which established the JCSS (see above) and most recently the Joint Committee for the GLOBE Consensus (JCGC)<sup>8</sup>.

<sup>8</sup> <https://cibworld.org/partner-organisations/>

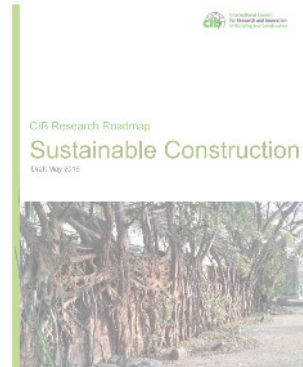


<sup>4</sup> <https://www.jcss-lc.org/about-us/>

<sup>5</sup> <https://cibworld.org/news/>

<sup>6</sup> <https://www.tandfonline.com/toc/rbri20/current>

<sup>7</sup> <https://cibworld.org/partner-journals/>





## Student Chapters, Early Career Researchers, and CIB Awards

In 1998 the CIB launched its first Student Chapters, with the aim to provide a means for students who will be the future leaders of building research and innovation to engage with and be inspired by current leading edge building research worldwide, and to appreciate at first hand the value of international exchange and cooperation, and as a bi-product to introduce those students to the advantages of CIB membership in their future professional research and innovation careers.

In 2023 three new Student Chapters were launched, bringing the number to 20:

Hong Kong University

Hong Kong Polytechnic University

London South Bank University

Massey University

Purdue University

Polytechnic of Milan

RMIT University

University of Huddersfield

University of Salford

Virginia Tech

Western Sydney University

Nelson Mandela University

Newcastle University

Pretoria University

Curtin University

Hungarian Universities

Association of Schools of South Africa

CIB Working Commission W080

Middle East Technical University

Tsinghua University

### Early Career Researchers

During the global pandemic in 2020-21, CIB launched a new online network for ECRs, broadly defined as those researchers with less than 5 years' research experience or within 5 years of obtaining a PhD or similar degree. This was a creature of its times, being online only and truly global, open to anyone who sees themselves as an ECR and who wishes to connect with their peers around the world. It is free of charge to enrol, regardless of their institution's CIB membership status, as a means to engage with and support the wider research community<sup>9</sup>.

### Vistas Programme Funding

The mission and vision of the CIB Vistas Programme, launched at WBC2022, is to stimulate, promote, collect, market, and disseminate a suite of global, visionary research and thought leadership centered around the future of the built environment and its impact on people and the planet. The first recipients were Jan Hugo of Pretoria University and Ruwini Edirisinghe of RMIT, and the 2024 recipients are Ania Khodabakhshian and Sepani Senaratne.

<sup>9</sup> <https://cibworld.org/ecr-network/>

## The CIB Sebestyén Future Leaders Award

This was named after the late Prof. Gyula Sebestyén, former CIB President (1971-74) and Secretary General (1980-1993), and was inaugurated in 2002. CIB Student Chapters are invited to submit proposals for projects that are in line with the CIB objectives each year. More details and a list of past winners is available on the website<sup>10</sup>.

2023



**POLITECNICO  
MILANO 1863**

Student Chapter,  
Politecnico di Milano,  
Italy

2022



UNIVERSITY OF NEW ZEALAND

Student Chapter,  
Massey University  
New Zealand

2021



Student Chapter  
University of Hong Kong  
Hong Kong

## The CIB Best Doctoral Research Award

In 2021 CIB launched this annual award to recognise the best PhD dissertations. Congratulations to the first three winners:

2023



Dr Luca Rampini,  
Politecnico di Milano,  
Italy

2022



Navodana Rodrigo,  
Western Sydney University,  
Australia

2021



Dr. Esmaeel Eftekharian,  
University of New South Wales,  
Australia

## Keith Hampson ECR Industry Award

In June 2022 CIB was delighted to announce a new award generously endowed by Keith Hampson, CIB President from 2019 to 2022. The award aims to recognise and encourage industry collaboration by ECRs, and the first winner was Nazanin Kordestani of Massey University, New Zealand, for work on the work-life balance of women professionals. The 2023 award was presented to Huey Wen Lim of University of Melbourne to further explore how work practices in prefabrication construction influence the wellbeing of the construction workforce.

<sup>10</sup> <https://cibworld.org/student-awards/>



## Governance

CIB was established by a small number of building research institutes and documentation centres. As time went on its membership embraced universities, professional associations and various types of (design, consulting, contracting etc.) companies. Throughout much of CIB’s history, three categories of Members have existed: Full, Associate (both for organisations), and Individual.

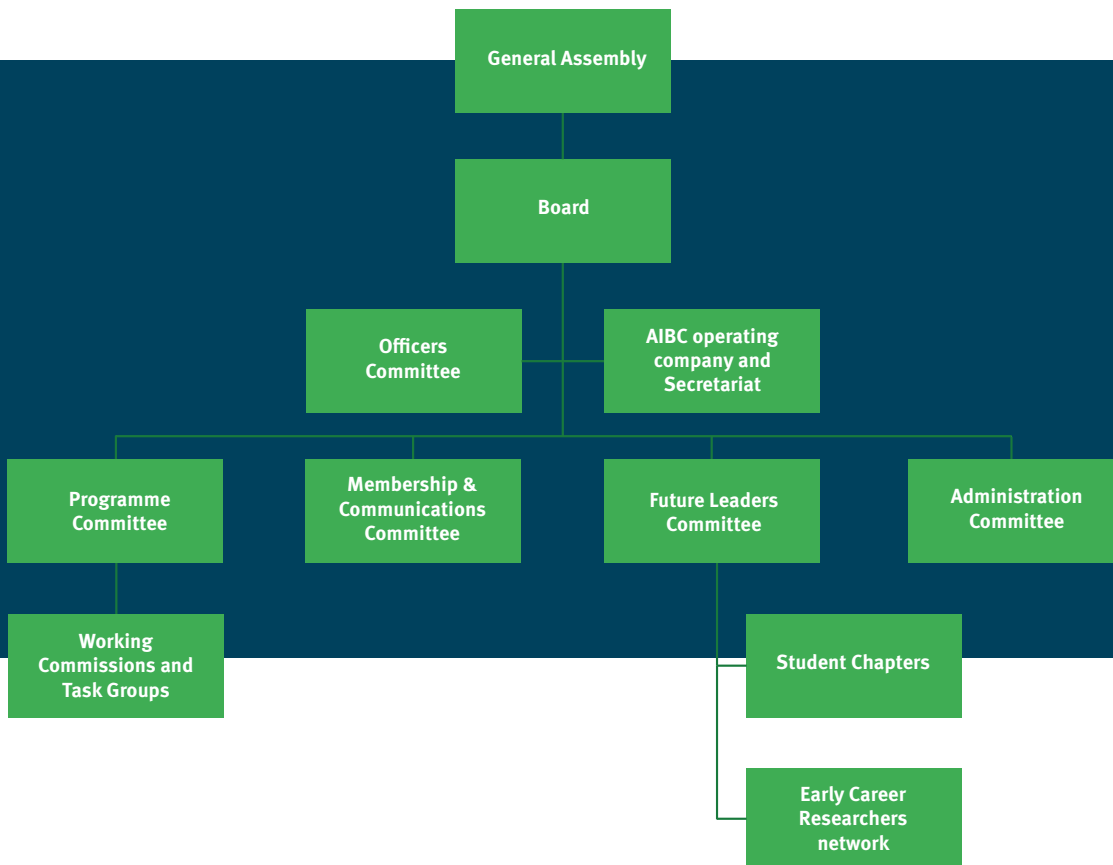
From 1959 General Assemblies were held in conjunction with the World Building Congress on a triennial basis. The operational direction of CIB was in the hands of an Executive Committee from 1951 to 1975, the first meeting of which was held in Geneva in 1951, and from 1976, a Board took over governance. The structure today is shown below.

## Organisational structure 2023

CIB has benefited from an impressive roll call of Officers who have contributed greatly to its development. The Presidents and Secretaries General/CEOs are listed below, and many others including Vice Presidents, Treasurers, Board Members, Commission Coordinators and secretariat team members equally deserve recognition for their outstanding contributions.



Current CIB President  
Makarand (Mark) Hastak



## CIB Presidents

1950–1955	Andre Marini, France	1992–1995	Jelle Witteveen, The Netherlands
1955–1957	Frederick Measham Lea, UK	1995–1998	Christer Sjöström, Sweden
1957–1959	Jan van Ettinger, The Netherlands	1998–1901	John Duncan, New Zealand
1959–1962	Frederick Measham Lea, UK	2001–2004	Sherif Barakat, Canada
1962–1965	Philip Arctander, Denmark	2004–2007	Rodney Milford, South Africa
1965–1968	Robert Ferguson Legget, Canada	2007–2010	Peter Barrett, UK
1968–1971	Gerard Blachère, France	2010–2013	John McCarthy, Australia
1971–1974	Sebestyén Gyula, Hungary	2013–2016	Shyam Sunder, USA
1974–1977	James B. Dick, UK	2016–2018	Helena Soimakallio, Finland
1977–1980	Sven Erik Lundby, Norway	2018–2019	Richard Tremblay, Canada
1980–1983	Nils Antoni, Sweden	2019–2022	Keith Hampson, Australia
1983–1986	Richard N. Wright, USA	2022–2025	Makarand (Mark) Hastak, USA
1986–1989	Pierre Chemillier, France		
1989–1992	George Seaden, Canada		

## CIB Secretary Generals/CEOs

1959–1971	J. de Geus
1971–1975	W.J. Bierens de Haan
1975–1979	J.R. Janssens
1979–1980	Christopher Pollington
1980–1993	Gyula Sebestyén
1993–1994	Monique Lévy
1994–2017	Wim Bakens
2017–2019	Deborah Couse
2019–2019	Kevin Goheen
2020–present	Don Ward



Student supporters at World Building Congress 2022, RMIT Melbourne









## // CONCLUDING COMMENT

What are the lessons to be learnt from this historical overview? Are we better or worse off after these seventy years? Has building research or CIB or the construction industry itself been instrumental in shaping the life of mankind?

One can claim with certainty that the construction industry has the capability to affect our world in a positive way. The problem has been that frequently construction work is interrupted by political or economic turmoil, and against these the industry is powerless.

It would make no sense to anticipate future calamities also and to call a halt to work on development of building technologies. Built environment research and CIB will have to face these if and when they appear. The construction industry and its research organisations will always be prepared to give their maximum endeavours for the betterment of the built environment.



## // REFLECTIONS



// Dr Keith Hampson,  
Chief Executive, SBEnrc  
CIB President 2019–2022

### Promoting CIB Research and Future Leaders through a pandemic

When I was elected President in June 2019, I set out three priorities to re-energise CIB over the term of my leadership. Little could we know what lay ahead in terms of the Covid pandemic! The pandemic created personal and professional challenges and was traumatic for some who suffered bereavements or illness. At the outset, I therefore express my heartfelt best wishes to our CIB family and offer thanks and appreciation for the hard work and commitment of so many across our global innovation network.

### 1. Establish a strong and effective CIB member service team

On this priority, I was delighted that we were able to recruit Don Ward as CEO. Don readily formed a strong and effective secretariat team. The pandemic necessitated reconsideration of the traditional central office model, so a globally distributed secretariat now services members via a virtual office with online working, a new website, more frequent member newsletters, webinars and improved marketing collateral.

Thank you to Don and the Membership and Communications Committee chaired by Ron Wakefield for overseeing this positive action. I believe that the engaging positive attitude of the secretariat and their transparency coupled with a constant sense of deep professionalism is a credit to our organisation.

### 2. Reinforce the importance of high quality, globally collaborative research as the core of our CIB

I was pleased to bring to the role a history of research leadership, having coordinated three task groups and active involvement in CIB research initiatives over the previous 25 years. Accordingly, in driving this strategic priority, we worked to ensure a closer relationship between Commission and Task Group Coordinators and the Board. I'm pleased that more than ever before, the CIB Board comprised representatives with an understanding of hands-on research and challenges of coordinating our international research collaborations.

Programme Committee Chair Kalle Kähkönen and Programme Director Michael Behm ably led significant progress improvements - dialogue between the CIB Board and Working Commissions is much more regular

and productive, and the new “CIB Vistas” initiative was launched at WBC2022 as an exciting and engaging way to reinvigorate our core research. Vistas will be key in promoting our modern multi- and inter-disciplinary research and innovation agenda supporting the United Nation’s Sustainable Development Goals.

### 3. Renewed focus on building membership – establishing the Future Leaders Committee

The value of the international CIB network is second to none. But, on the third priority, the pandemic undoubtedly impacted our membership. We responded by improving communications and the value proposition for members. We also initiated a strategy to diversify revenue sources to reduce dependence on direct membership subscriptions - and I am grateful to incoming President Mark Hastak who led this strategy. Student chapters across the world form a pivotal building block for research and a foundation for CIB membership. As an integral part of building membership and value, we’ve grown our global Student Chapter activity. With thanks to Albert Chan, Chair of the Student Chapter Committee, we fostered growth amongst Student Chapters, secured CIB project funding for them, and re-energised Student Awards. Special thanks to Srinath Perera who chaired the newly established Future Leaders Committee. This group quickly engaged with over 150 Early Career Researchers and combined with students as an energised and valuable network for CIB to support the development of future research talent and research leadership in the built environment.

In this sense, I was delighted that the CIB Board accepted my offer to endow an annual award for best-practice industry-research collaboration – the CIB Keith Hampson Hampson ECR-Industry Award.

I was so pleased that many of us were able to meet again in person for WBC2022 in Melbourne. Hosting of the World Building Congress is a privilege offered to the President, and RMIT’s Ron Wakefield kindly offered to take on this role as a core member of Australia’s Sustainable Built Environment National Research Centre (SBEnc). Ron and his team did an amazing job in difficult circumstances in delivering a conference serving more than 600 people in hybrid format.

It is the personal relationships formed in CIB which have been the greatest benefit – and pleasure - of my long association with this organisation. The personal energy expended in building national and international networks will be returned in multiples for CIB members at all levels. I am pleased to offer my support going forward wherever it is welcome.

I extend my deep thanks for the trust placed in me to lead CIB as President over the 2019-22 period. It was a true honour. I thank fellow Board members and the secretariat of CIB for their excellent efforts over this period, and I wish the CIB every success in the future.



World Building Congress 2019 site visit





/// Professor Peter Barrett, Emeritus  
Professor, University of Salford  
CIB Past President 2007–2010

## Revaluing construction – and CIB

My involvement with the CIB goes back a long way and went through various phases. In 1989 as a young academic I was welcomed into W88, the Working Commission for Quality Assurance in construction. Suddenly I had a world-wide network of friends and colleagues and was engaging in discussion with (maybe the few) other people in the world really interested in this topic. Together we created with a review of QA practices in thirteen countries and it was very apparent to me that the “whole” of the group was massively more than the sum of its parts. So out of this I gained individually, but also recognised the raw power of bringing together international specialists in a trusting collaborative environment. For me this remains the engine room of the CIB.

After that I was involved in various other groups, but mainly W65 – the Organisation and Management of Construction. In 1996 I became coordinator of this group, which was working on a key topic for the improvement of the industry. In practice it was struggling to maintain a programme of biennial meetings and we moved to annual meetings with a bit of competition over the next host and before long a series of vibrant annual meetings and very full proceedings were established. Being coordinator (not leader note) for nine years of a group of 150 researchers from 25 countries was a challenge, but made me realise how much energy there is out there if it is given an

outlet. It also rammmed home the value of specialists being together academically and socially to build strong international bonds. These, once established, become of enduring benefit to those involved and can underpin a wide range of projects and other initiatives.

In 2005 I carried out a five-country study on “Revaluing Construction” (Professors Courtney and Winch’s refinement of re-engineering). This built on many CIB connections and led to an overview of the levers for positive change, but also highlighted a huge gap, namely: how is the value of construction derived by users of the built environment and so society? Investigating this would become a personal mission for me for many years.

In the meantime, in 2007 I took up the role of President of the CIB. This was an honour and an opportunity to promote the idea of releasing synergies between the specialisms represented in the CIB. This was taken forward around big societal challenges and fed into the World Congress in 2010. Here we enjoyed the involvement of potential users of the outputs of the CIB, such as UNEP, WHO, the OECD and Government representatives. 650 papers were received from around 50 countries and more than 700 participants attended. The logistics were rather complex, but with the help, especially of my Sri Lankan colleagues, the event seemed to go very well. For me at least, to host the CIB in Salford, UK, was the high point of my presidency.

More recently I have been continuing my work on the impact of the built environment on users, especially in schools and this has led to the identification of an evidenced measure of this impact. Namely, 16% of pupils’ annual learning progress being explained solely by variations in the physical characteristics of their classrooms. I always knew construction was important, but it is brilliant to have pinned down clear evidence. This could not have happened without the experience and support of involvement in the CIB for many years – for that, thank you.



// Professor Billy Hare,  
Co-Coordinator CIB W099 Safety  
Health & Wellbeing in Construction  
Glasgow Caledonian University, UK

## How long have you been a member of CIB?

I became a member of CIB through my Institutional membership, after attendance at my first international conference in 2005: W099 "Rethinking and Revitalizing Construction Safety, Health, Environment and Quality" in Port Elizabeth, South Africa. I had started my academic career in 2002, and had been citing many of the authors at the conference whilst undertaking my PhD, so this was a chance to meet them in person, and it became the start of many lifelong friendships.

## What do you like most about CIB?

First and foremost, CIB has been my ultimate international networking forum for engaging with academics in the built environment. I always feel at home and surrounded by friends when attending a CIB meeting, whether it be online or face to face. Through this network, I've been able to find information and resources, share ideas, and learn from my peers, which has been vital for my personal development and academic career. Nothing epitomises this more than the W099 working group "Safety, Health and Wellbeing in Construction", which has been integral to my work in this research area over my entire academic career. These working groups sit at the heart of what CIB offers academics of the built environment, and fortunately for me, W099 has an abundance of like-minded researchers who make being part of this group so rewarding and enjoyable.

## How has CIB helped shape your academic career?

I joined CIB when I was a Research Assistant, and I now co-lead the W099 Working Group, whilst attaining the position of Professor within my own institution. This is something I didn't even think I was capable of 20 years ago, and cannot overestimate the role CIB has played in the development of my career. Everything, from that first international conference I attended, opening my eyes to new cultures, meeting people I had previously cited in my PhD thesis (and hearing how their names were pronounced), along with invitations to visit the new friends I had made, had an immediate impact on what I could achieve. International research collaborations, invitations to speak at events, and through time, reciprocal invitations for international experts to come and work on my own funded research projects has greatly enhanced my research output. Another major benefit of growing my network internationally through CIB has been the role these members have played as referees for my various applications for promotion over the years. An international profile is essential for a senior academic in any institution, and I would have struggled to achieve this without membership of CIB. I was delighted to be a co-winner of the inaugural 'Dr. Wim Bakens Best Coordinator' award at the WBC Melbourne Australia in 2022, which was greatly celebrated by my own institution, including a personal letter of congratulations from my PVC. This acknowledgment from the most senior person in my university really emphasised the importance of both the award and the CIB to the work I do. In more recent years, I have organised international conferences for W099, and served on a number of CIB committees, as I try to 'give back' some of the experiences I've benefited from, to help new Early Career Researchers and PhD students of CIB. And even this provides me with new benefits of my own, as I learn from the CIB award-winning PhD students about their innovative and impactful research, which I am now sharing with my own PhD students, as I continue to reap the benefits of CIB membership.



## // CIB'S PRESENT AND FUTURE



// Professor Makarand (Mark) Hastak  
CIB President

### Current activities and expectations

As we celebrate our 70th anniversary, it is my honor as the 26th President of CIB to report on our current standing. My predecessors did a great job in maintaining the integrity of CIB as a global organization for research and innovation in the built environment, and I intend to continue that trend. Our board includes researchers and academics dedicated to the cause and vision of CIB, and we have established priorities to strengthen CIB in this post-pandemic era, through (1) membership growth, (2) new value-added propositions, and (3) growing CIB's profile and influence.

I look forward to meeting as many members as possible during my tenure and to pursuing these priorities while attracting new members.

### Membership growth

There are distinct advantages of being a membership-based organization as it allows for accountability and openness in leadership and governance as well as voluntary efforts invested by members, particularly in the Working Commissions, Task Groups and Student Chapters. However, the recent pandemic has resulted in fiscal tightening in member organizations leading to outstanding debt, travel restrictions and a downward trend in membership. This presents a challenge to our revenue and membership participation in face-to-face activities. Hopefully this trend will correct itself in the near future as the world finds a new balance in the post-Covid era. In the meantime, I share with our CEO Don Ward the ongoing aspiration to continuously improve the value of CIB membership. It will be

important to prevent membership fees from being a barrier to participation, but this will first require us to identify alternate and complementary funding mechanisms if we are not to impact the level of service and engagement currently available to members.

My first presidential visit was to India in January of this year along with Don Ward, followed by a trip to Brazil in May with Don as well as Vice President Prof. Patricia Tzortzopoulos and our local host and board member Prof. Eduardo Toledo Santos. Both visits were fruitful and productive in promoting the message of CIB and not only reinforced the membership base but also attracted new members to add value to the organization. Our Programme Director Prof. Theo Haupt has also attracted new members in South Africa, and other board members have actively introduced CIB around the world, for example, Prof. Hisham Elkadi organized a conference in Hanoi, Vietnam, that attracted significant participation from local organizations. Hisham also included CIB in a seminar he chaired at the UN's COP28 conference in Dubai.

### New value-added propositions

Our core strength lies in our global footprint that traces back to our formation with the help of the United Nations, and includes members that are engaged in cutting edge research and innovation in the built environment. These researchers and educators form a global think-tank with a strong potential to influence the future of the built environment. This body of experts engages and mentors Early Career Researchers (ECRs) as well as students around the world, ensuring continuity in research and innovation. Our Board meets three times a year - a virtual meeting in March followed by two face-to-face meetings hosted by board members. These meetings not only bring new thinking and value propositions for our membership but also afford the opportunity for the board to engage with the local industry as well as new and existing members. The two face-to-face meetings in South Africa and New Zealand in 2023 were a notable success thanks to our hosts, board members Prof. Wayne Draai from Nelson Mandela University and Prof. Monty Sutrisna from Massey University.

The Third-Party Funding task group, chaired by Dr. Michael Lacasse of NRC Canada, finished a study of 80 Charitable Foundations that fund research or other activities in the construction and built environment sector around the world. We now aim to build on this by bidding with member consortia for funding that plays into the unique strengths of our global network.

Other progress under this heading in the last year includes:

- ▶ Two CIB Presidential webinar series hosted by me from Purdue University: (1) from January to April 2023 to showcase the ground-breaking work of our various commissions, and (2) from August to December of 2023 to highlight the work of distinguished women researchers in the built environment. My thanks to all the CIB Coordinators and researchers who presented these webinars. They are available through our CIB website.
- ▶ The announcement of a new fellowship called the CIB Visiting Global Scholar Programme to foster new collaborations between CIB member organisations, initially funded by an anonymous benefactor.
- ▶ Presenting the Hampson Award for industry-ECRs collaboration to PhD candidate Nazanin Kordestani of Massey University, New Zealand, as the first recipient of the award.
- ▶ Awarding Vistas funding to Dr. Ruwini Edirisinghe from RMIT for her research on gender Diversity in Construction and to Dr. Jan Hugo from University of Pretoria for his research on Sustainable Facade Systems

## Growing CIB's profile and influence

It is important that we build on existing relationships and form new ones with key third parties around the world including industry practitioners, policy-makers and regulators. We look to prioritise our relationship with the UN where CIB and the members have so much to contribute to the Sustainable Development Goals (SDGs). Many, if not all, of the 17 SDGs have links with the built environment and the cutting-edge research of our members has a lot to offer as we strive to build a sustainable world. Similarly, we look forward to building relations with the World Bank as well as global charitable foundations and large businesses in our sector.

Purdue University in the USA will host the 23rd World Building Congress (WBC2025) from May 19-22, 2025. The theme of WBC 2025 is "Sustainable Built Environment: the role of the construction industry in meeting the UN Sustainable Development Goals". Prof. Z Torbica and I are the co-chairs with much help and guidance from the Scientific Committee as well as our Local Organizing Committee. We intend to bring together participants from the industry, academia, and research organizations to deliberate on the conference theme, and I look forward to seeing everyone there.

With best wishes for a successful triennium to the entire CIB network.



**SUSTAINABLE  
DEVELOPMENT  
GOALS**





// Don Ward,  
CIB Chief Executive

## Thinking about the next 70 years

In its first 70 years CIB evolved from an esteemed body of Europe’s top researchers in the building and construction sector forming long-term Commissions to pool knowledge on the technical challenges of the day, to a global network addressing the complexity of social, technical and environmental challenges across the built environment. Until very recently, it relied on face-to-face meetings and outputs in the written word, and it was highly effective.

No doubt some of the leading experts of the times foresaw some of what was to come in terms of the impact of technology, people, and the environment. There would have been many researchers around the world at the leading edge of developments in all these areas. One disappointment for me would be the time lapse between this leading edge knowledge and impacting mainstream industry practices, probably comparing poorly with other sectors. For the lay person and so many customers this remains a difficult industry to interact with, to buy from, or from which to receive great satisfaction.

Fast forward 70 more years and we will be on the brink of the 22nd century. The United Nations tells us that average global temperature will have risen by over 3°C<sup>11</sup> - maybe less if world governments are seized of the need for drastic action, maybe more if complacency is even deeper embedded than it can seem. The UN’s estimate of a global population of over 10 billion by then means that 2 billion more people will be at risk of “a host of impacts and catastrophic consequences”, and the production and maintenance of built environment will be an important part of the problem and of the solution. Has an industrial sector even been more vital to the future of humankind?

<sup>11</sup> <https://www.unep.org/explore-topics/climate-action/what-we-do/climate-action-note/state-of-climate>  
Accessed 31 August 2023

What also seems certain is that the complexity of the challenges in the sector will increase, and the requirement for multiple disciplines to collaborate to address them will grow. New materials and more advanced applications of digital technology, perhaps particularly in robotics and artificial intelligence, will combine with more focus on the well-being of our populations to provide more sophisticated solutions to these complex challenges. Maybe construction

### THE GLOBAL GOALS For Sustainable Development



will finally morph into an advanced manufacturing sector as so many have predicted before. And even more ambitiously, can we become an evidence-based industry collecting performance data on all aspects of the life-cycle, and combining this with pure and applied research learning to improve year-on-year. We will also need a better ecosystem to support innovation, to allow the development of brand new ideas which may lead to new radical breakthroughs in practice.

We will also be seriously challenged by the capabilities of AI, both in the world of education and in the industry. It took me over 30 years to develop my knowledge of this sector, it took seconds for ChatGPT to provide the following sensible, if bland, viewpoints.



*"The future of construction research is likely to focus on sustainable and innovative practices, including advanced materials, automation, robotics, 3D printing, and digital technologies. Researchers will work towards creating more energy-efficient and resilient structures while reducing environmental impact and construction time. Collaboration between different disciplines and industries will play a significant role in driving advancements in construction techniques and methodologies.*

*...In the long term, construction research is likely to focus on even more advanced and sustainable practices. This might include the development of self-healing materials, structures designed to interact harmoniously with their environment, and construction methods that generate minimal waste. Integration of AI, machine learning, and advanced robotics could lead to highly efficient and automated construction processes. Additionally, research might also delve into space construction techniques as humanity expands into extraterrestrial habitats. The emphasis will remain on minimizing environmental impact, improving efficiency, and adapting to the evolving needs of society."*

Some of the biggest challenges may include how to rid ourselves of a dependence on energy-intensive materials; how to use performance data to demonstrate the value of investment in built environment and to rid ourselves of the perils of lowest-price tendering; and how to develop a sector which genuinely inspires young people to choose us as a 'career' rather than astronaut, doctor, or professional e-sports player. Surely the smart deployment of technology will be key to this? And yes maybe, as ChatGPT suggests, we can integrate some of these aspirational jobs to support the development of new built environments in outer space.

As well as adding value for research on the above challenges, and addressing the impact of AI including on the value of its own services, CIB will need to address the much changing worlds of business, academic and policy. Maybe CIB's scope should extend beyond research and innovation to education and training. It will need to become expert at

utilising online platforms to support innovation and facilitate networking instead of requiring people to travel around the world to meet face-to-face to be most effective. And CIB may succeed in exploiting the unique talent within its network to evolve into a 'think tank' and help address the modern suspicion of 'experts' held by governments around the world by providing access to an unbiased and non-commercial global network.

Amidst all this speculation, what seems certain to me is that, without the current CIB, there would be many around the world who would seek to create a global network to enhance the quality of research and its impact in our sector, so it is imperative that we seek to respond to these external drivers and evolve the organisation to be the fittest it can be for the next 70 years.



## MESSAGES OF SUPPORT

### Coordinators



Congratulations to CIB on its 70th anniversary from commission W78 IT in Construction which celebrates its 40th anniversary this year. CIB provided the platform for a vibrant and long-lasting international community of researchers. CIB showed great foresight in recognising the affect IT would have in the industry when establishing W78. With the longest running international conference series in Construction IT we have had the opportunity to grow generations of researchers and launch dozens of careers. CIB's reputation has been instrumental in attracting the top researchers from around the world to pool their expertise to this end.

/// Robert Amor, Joint Coordinator W78  
IT in Construction



The CIB has a lot to celebrate over its 70 years. It is a global organisation bringing countries together to advance research on global issues as they relate to the construction industry such as sustainability and the health and wellbeing of people. Through its Commissions and Working Groups it reaches out internationally to seek innovation and creative ideas to deepen our knowledge and contribute to the rapidly changing social and technological vistas. CIB allows us to operate openly across academia and industry worldwide.

/// Derek Clements-Croome, Joint Coordinator W098  
Intelligent and Responsive Buildings



Huge congratulations to CIB on their 70th anniversary! This is truly a momentous occasion that reflects decades of dedication and progress. I'm amazed by how CIB has always supported researchers in the building and construction field. The impact of CIB's efforts is immeasurable, as they have fostered an environment where researchers can thrive, explore new horizons, and contribute meaningfully to the field. I hope CIB keeps inspiring more researchers in the future and helps make building and construction even better.

/// Niluka Domingo, Joint Coordinator TG124  
Net Zero Carbon Building Design and Construction Practices



I have been involved with the CIB for more than 30 years, about 10 years of them as member of its board. In my experience the CIB has provided researchers a rare opportunity to work together, crossing borders and cultures. One of the key contributions of the CIB in improving the construction industry across the globe is through creating a platform for researchers to debate issues critical to the construction industry, national economy, society, and the world. In particular, the CIB created opportunities for many countries to strengthen their research culture by creating opportunities for knowledge sharing and collaboration.

/// Mohammed Dulaimi, Joint Coordinator TG96  
Accelerating Innovation in Construction



On behalf of W123 (previously TG59), I felicitate with the CIB on its 70th anniversary. As a living poster boy of 'Ubuntu' in CIB, I confirm that there is no better platform for inquiry-led efforts to better the life of the construction workforce than the CIB. Indeed, the CIB helps us realise that "we are human only through the humanity of others; that if we are to accomplish anything in the world, it will be in equal measure due to the work and achievement of others (Nelson Mandela)." I thank and congratulate the CIB for the community's profound and evident sense of Ubuntu.

// Fidelis A Emuze, Joint Coordinator W123  
People in Construction



As a proud member and Joint-coordinator of W065, I am delighted to celebrate CIB's 70th anniversary. Over the years, I have been passionate to participate in CIB conferences, events and meetings and my research career has greatly benefited from the excellent global network of experts provided by CIB. It is a great honour to be part of this dynamic community and have the opportunity to contribute to the growth of W065. I look forward to working with the CIB communities and contributing to CIB's next chapter of success.

// Yingbin Feng, Joint Coordinator W065  
Organisation and Management of Construction



It is great that CIB is still active after 70 years as the only global research organisation for architecture and the built environment. The research roadmaps are a really good innovation in helping to define the scope of each area of study. Our commission has enjoyed a variety of activities with different combinations of commissions and task groups. The Melbourne Congress 2022 was a landmark in developing conference papers into journal papers through strategic alliances with high level academic journals. We look forward to CIB responding even more to university needs around the world. May it continue to thrive.

// Bob Giddings, Joint Coordinator W096  
Architectural Design and Management



My first formal engagement with CIB dates back to 1995, where I presented my work at the CIB W89 Symposium in Florida, USA. Whilst this was quite daunting at the time, I was made to feel at home. It was at this event that I truly understood the term "community", noticing the collective excitement and fervour underpinning CIB's esprit de corps. This opened my eyes to an "Aladdin's cave" of possibilities. To this day (2023), CIB continues to support me, W121, and the many wider research/practice communities across the world. Thank you CIB, and here's to the next 70 years!

// Jack Goulding, Joint Coordinator W121  
Offsite Construction



I would like to congratulate CIB on achieving this milestone. As W062, we have a thriving international research community that would, most likely, not otherwise exist without the support and platform for dissemination provided by CIB, and our back-catalogue of publications provides an invaluable resource to academics and industry alike. We have seen many collaborations built upon the strength of our CIBW062 community and we look forward to many more to come. Thank you CIB, may the great work you do continue long into the future!

// Lynne Jack, Coordinator W062  
Water Supply and Drainage for Buildings

## Coordinators continued



CIB has accompanied with my academic and practitioner career for last 28 years. Besides inspiration from its broadened fields and multidisciplinary existence, intensive involvement with strong interests in the commission W104 Open Building Implementation is leading me and our colleagues to ever new frontier. I participated in the CIB's research extension in Asia and particularly China, in which rapid urbanization improved quality of living and, at the same time imposed large environmental pressure. I believe CIB will continue lead the building industry towards building a worldwide future which is equal, harmony, and higher quality with lower carbon emission.

/// Beisi Jia, Joint Coordinator W104  
Open Building Implementation



Congratulations to CIB on reaching this incredible milestone of seven decades of advancing international construction research and collaboration as well as fostering innovation and excellence in the construction industry. CIB has undoubtedly shaped the future of construction worldwide and will surely make greater impact in the years to come. Happy 70th birthday, CIB!

/// Xiaohua Jin, Joint Coordinator W055  
Construction Industry Economics



Happy 70th Birthday CIB! From my very first conference as a student member, to full membership and now joint coordinator of W099, CIB has been the space in which world-leading academics of construction worker safety, health and more recently wellbeing can come together meaningfully to disseminate their work, share and learn from each other as well as engage more widely with industry. The international membership of W099 is a testament to the reach and role of CIB as a truly global entity and leader in the betterment of the built environment and its production. Through CIB we are able to really make changes for construction workers across the world. Here's to the next 70 years!

/// Fred Sherratt, Joint Coordinator W099  
Safety Health & Wellbeing in Construction.



On this platinum jubilee celebration, a massive congratulation to CIB leaders and members. This is a remarkable landmark achievement in terms of the contribution CIB as a whole and W102 has strived towards excellence and impactful contribution to the society. I started my journey with CIB in 2003 as a member of the student chapter. It has been 20 years of involvement in various capacity and I wish to be part of the CIB family in the years to come.

/// Subashini Suresh, Joint Coordinator W102  
Information and Knowledge Management in Building



As a dedicated member and joint coordinator of the TG81 team, I am incredibly proud to be part of CIB as it celebrates its 70th anniversary. Over the past seven decades, CIB has significantly advanced international construction research and collaboration, a feat worth celebrating. By fostering an innovation environment, CIB has been instrumental in pushing the global boundaries of excellence within the construction industry and keeping members motivated. CIB has been a catalyst for many researchers, including myself. I am confident that CIB will continue to influence and shape the industry's future just as it has done over the past seven decades. Congratulations CIB on this momentous milestone! Here's looking forward to the next growth stage and our journey together.

/// Abimbola Windapo, Joint Coordinator TG81  
Global Construction Data



## Student Chapters



"Congratulations to CIB on their 70th anniversary! The CIB Student Chapter at University of Hong Kong commends our unwavering commitment to support CIB as always. As a global network, CIB has fostered collaboration among researchers, practitioners, and policymakers to enhance the built environment. Their contributions in sustainable construction materials, energy-efficient design, and smart technologies have shaped the industry's future. CIB not only helps build the bridge between young scholars with the academic fields, but also helps us reach out the international networks. We are proud to be part of this remarkable organization and look forward to further collaboration in driving excellence and innovation in the field. Here's to many more years of success and advancements!"

// Jiali Li, President of CIB Student Chapter  
at Hong Kong University



"On behalf of our CIB Student Chapter, I extend heartfelt congratulations on the occasion of CIB's 70th Anniversary! It's truly inspiring to witness how the connections forged within the CIB community contribute to the exchange of opinions and provide a test bed for sharing ideas. The collaborative spirit among members creates dynamic synergy, making CIB a hub for fast-paced and engaged cooperation. Hence, the commitment to advancing the construction sector is evident in the continuous support and encouragement that flow from the Commissions to all the Student Chapters. As we celebrate 70 years, let us continue to build bridges, break barriers, and shape the future of construction together."

// Andrea Giovanni Mainini, President of CIB Student Chapter  
at Politecnico di Milano, Italy



"On behalf of the CIB Student Chapter at the University of Salford, I extend our heartfelt congratulations on CIB's 70th anniversary. We are honoured to be part of this distinguished global network, fostering collaboration and innovation in the built environment. The rich history and enduring commitment of CIB inspire us as postgraduate researchers to take pride in our contributions towards this history by promoting awareness of CIB, building collaborative relationships, expanding knowledge, and enhancing skills. May this commemorative year be a testament to the enduring impact of international collaboration in advancing research and innovation in the built environment."

// Alex Mbabu, President of CIB Student Chapter  
at University of Salford

## External organisations



“The fib is happy to congratulate CIB on its 70th anniversary. We have collaborated with CIB in the Liaison Committee, which has been active since 1958, and are looking forward to future and very fruitful collaborations in all the common challenges around the built environment.”

// Dr David Fernández-Ordóñez,  
fib Secretary General



“The IASS is pleased to collaborate with CIB in the Liaison Committee and congratulate you on your 70th anniversary. We look forward to continuing and enhancing our cooperation in the future, especially in the field of structural safety and sustainability.”

// Carlos Lázaro,  
IASS President



“RILEM, the International Union of Laboratories and Experts in Construction Materials, Systems and Structures, was founded in 1947. CIB was founded in 1953. Only a few years after their reciprocal establishment, in 1958, the Liaison Committee, a body initiating contact between international associations of civil engineering, was formed. Since RILEM and CIB have been partners and members of the Committee, they have been carrying out many joint activities, including the most recent GLOBE initiative. RILEM congratulates CIB for its 70th anniversary and looks forward to many more years of successful collaboration!”

// Dr Nicolas Roussel,  
RILEM president



## // CIB BOARD MEMBERS

### CIB Board members January 2024 (from 17 countries across six continents)

#### Officers

Makarand (Mark) Hastak, Purdue University, USA - President

Patricia Tzortzopoulos, University of Huddersfield, UK - Vice President

Ron Wakefield, RMIT University, AUS - Vice President

Paul Chan, TU Delft, NL - Treasurer

Kim Haugbolle, Aalborg University, DK - Programme Committee Chair

Srinath Perera, Western Sydney University, AUS - Future Leaders Committee Chair

Georg Reichard, Virginia Tech, USA - Membership & Communications Committee Chair

Keith Hampson, SBEncr/Curtin University, AUS - Immediate Past President

#### Other Board members

Saeed Bakhtiyari, Building and Housing Research Center, IRN

Wayne Draai, Nelson Mandela University, RSA

Taha Elhag, Heriot-Watt University (Dubai), UAE

Hisham Elkadi, University of Salford, UK

Dongping Fang, Tsinghua University, PRC

Bart Ingelaere, Buildwise, BEL

Huub Keizers, TNO, NL

Thomas Kirmayr, Fraunhofer Information Center for Planning and Building IRB, GER

Michael Lacasse, National Research Council Canada, CAN

Göran Lindahl, Chalmers University of Technology, SWE

Kathy Michell, University of Cape Town, RSA

Piia Sormunen, Tampere University Foundation, FIN

Monty Sutrisna, Massey University, NZ

Janne Tahtikunnas, RIL - Finnish Association of Civil Engineers, FIN

Anita Terjék, ÉMI, HUN

Eduardo Toledo, University of São Paulo - Escola Politécnica, BRA

Tarek Zayed, Hong Kong Polytechnic University, HK/PRC



## // CIB MEMBERSHIP

CIB has a broad membership base with full, associate and individual members located around the world.

### Full members as of January 2024



Building and Housing  
Research Center



ÉMI



Heriot-Watt  
University



Massey University



Sustainable Built  
Environment  
National Research  
Centre (SBEnrc),  
Australia and Curtin  
University



National Research  
Council Canada



National Research  
Council of Italy



RMIT University



SRIBS



TNO Built  
Environment

## Associate members

Aalborg University  
Anglia Ruskin University  
Architecture and Building Research Institute -  
Ministry of the Interior Taiwan  
Auburn University  
Birmingham City University  
BRANZ - Building Research Association  
of New Zealand  
Buildwise  
Canntech Services Pvt Ltd  
Chalmers University of Technology  
Competence Center Typology and Planning  
in Architecture (CCTP)  
Council of Registered Builders of Nigeria  
CSIR Built Environment  
Delft University of Technology  
DTU - Technical University of Denmark  
Eindhoven University of Technology  
Fraunhofer Information Center for Planning  
and Building IRB  
Glasgow Caledonian University  
Halmstad University  
Hong Kong Polytechnic University  
Institute of Technology Sepuluh Nopember  
Instituto de Pesquisas Tecnologicas  
do Estado de Sao Paulo - IPT  
IST-ID  
Istanbul Technical University  
Kashiwagi Solution Model Incorporated  
Leeds Beckett University  
London South Bank University  
Mangosuthu University of Technology  
Middle East Technical University  
National Taiwan University of Science  
and Technology  
National University of Singapore  
Nelson Mandela Metropolitan University  
NICMAR University  
Northumbria University  
Norwegian University of Science  
and Technology  
Oxford Brookes University  
Politecnico di Milano  
Purdue University  
RIL - Finnish Association of Civil Engineers  
RISE Research Institutes of Sweden  
Shaikh Zayed University (SZU)  
Southeast University, Nanjing  
Spanish Council for Scientific Research -  
Eduardo Torroja Institute for  
Construction Science  
Sustainability Orientated Cyber Research Unit  
for the Built Environment (S+CUBE)  
Tampere University Foundation  
Technical University of Denmark  
Torrens University Australia  
Tsinghua University  
TU Dublin  
TUT - Tallinn University of Technology  
University of Brighton  
University of Cape Town  
University of Florida  
University of Hong Kong  
University of Huddersfield  
University of Johannesburg  
University of Lagos  
University of Melbourne  
University of Moratuwa  
University of Newcastle  
University of Pretoria  
University of Reading  
University of Salford  
University of São Paulo  
University of South Africa  
University of the Witwatersrand  
University of Ulster at Jordanstown  
University of Wolverhampton  
University of Zagreb  
Virginia Tech  
VTT Technical Research Centre of Finland  
Western Sydney University





CIB is the global network for research and innovation in construction and the built environment.



**ORGANISATIONS CAN JOIN AS FULL,  
ASSOCIATE OR INDIVIDUAL MEMBERS.**

Contact us today to find out more.



[www.cibworld.org](http://www.cibworld.org)

Email us at [secretariat@cibworld.org](mailto:secretariat@cibworld.org) for more details.

Published June 2024.

