



2.1 Annual Report of Hong Kong University Student Chapter

2.1.1 Brief Explanation of the History of the Chapter and its Objectives

The CIB-HKU chapter is a student-professional organization established in 2005, about 18 years ago, supported by the committee of CIB with the assistance of the Faculty of Architecture, The University of Hong Kong.

Our major aim is to establish an international platform providing local and international connections and to promote discussions and debates on general issues and cutting-edge research trends among all the RPG students in the Faculty of Architecture, The University of Hong Kong. Based on this major aim, we develop three guiding objectives:

- 1) Linkage among the Department of Architecture, Real Estate and Construction, as well as Urban Planning and Design in the Faculty of Architecture, HKU
- 2) Collaborative internationally research
- 3) A series of globally research sharing session

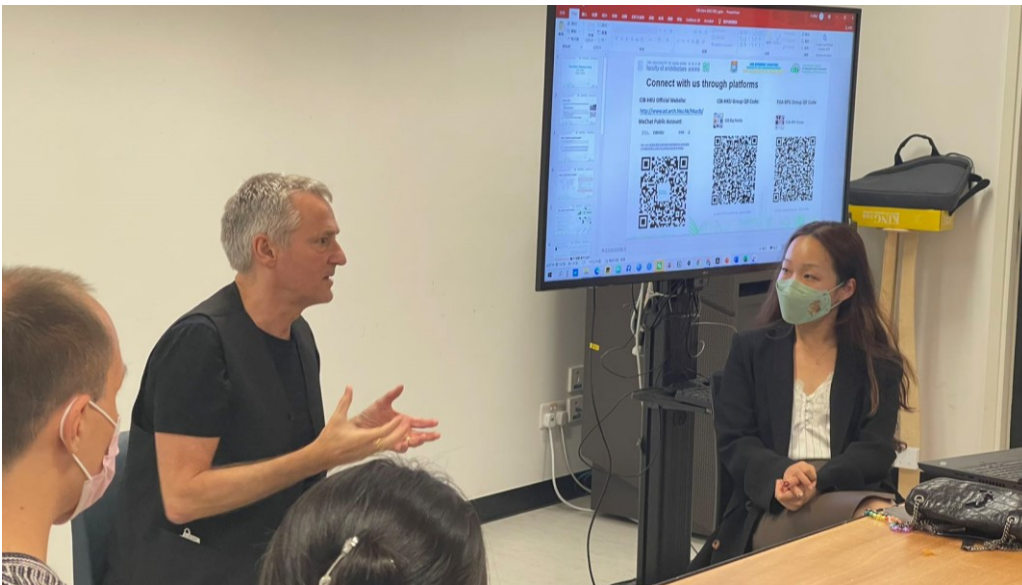
For the past few years, with the collaborative efforts by the CIB-HKU committees, we gradually achieved the goals by the diverse activities. The yearly events included the network construction, the Sebestyén Award, the funding award, the seminars, and reading sessions.

2.1.2 Completed and Upcoming Activities of the Chapter in the Current Year

We have successfully organized a series of academic events as well as connection building activities this year. Including one recruitment welcome activity, and two research seminars.



- **Welcome party.** We hosted a New RPGs Welcome Party and recruitment event facing the whole architecture department. The event includes warm-up games, detailed introduction of global and HKU CIB, our past and future works, the recruitment plan, and the keynote speech from dean, and other supervisors.



- **Research Seminar.** We organized a research seminar focusing on "Planetary Health and Human Well-being", and invited Prof Bin Jiang for the University of Hong Kong as the guest speaker to give a lecture and discuss with students.



**CIB-HKU 2022 Research Seminar
Urban Green Landscape and Mental Health**



Bin JIANG

Associate Professor, The University of Hong Kong (HKU)
Director, Virtual Reality Lab of Urban Environments and Human Health (UEHH), HKU
Co-Chair, Research & Methods Track, Council of Educators in Landscape Architecture (CELA), USA
PhD, University of Illinois at Urbana-Champaign, USA

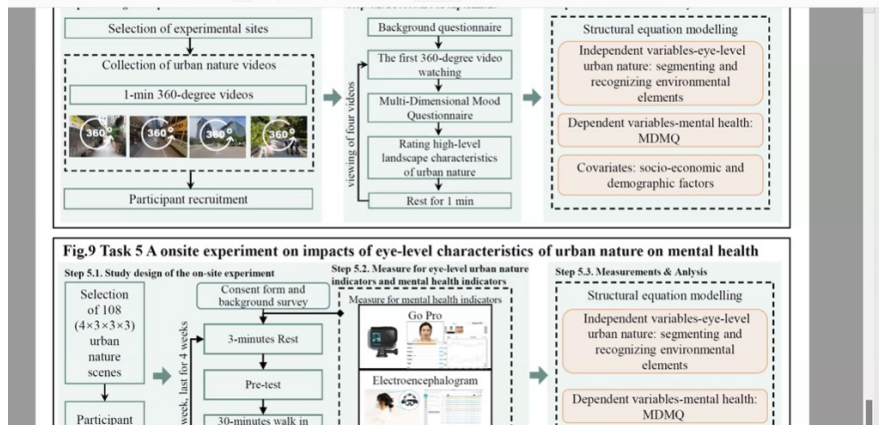


pdf - Adobe Acrobat Pro DC (32-bit)

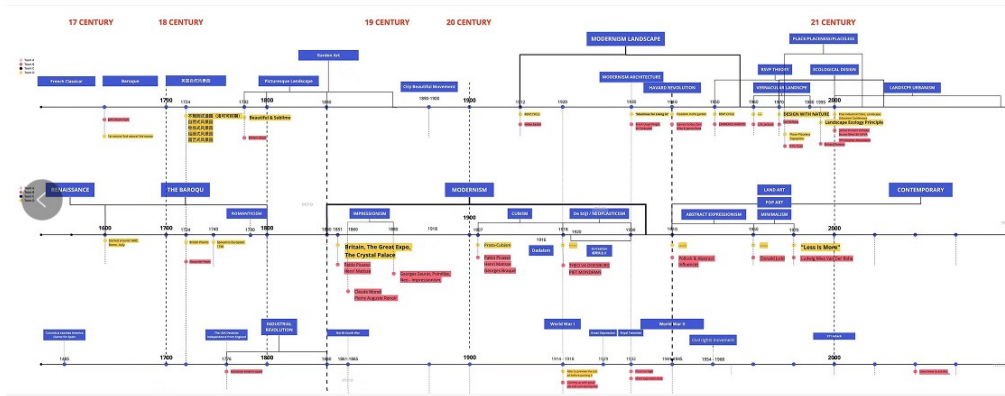
视图(V) 电子签名 窗口(W) 帮助(H)

CRF_PIC_0703.pdf x

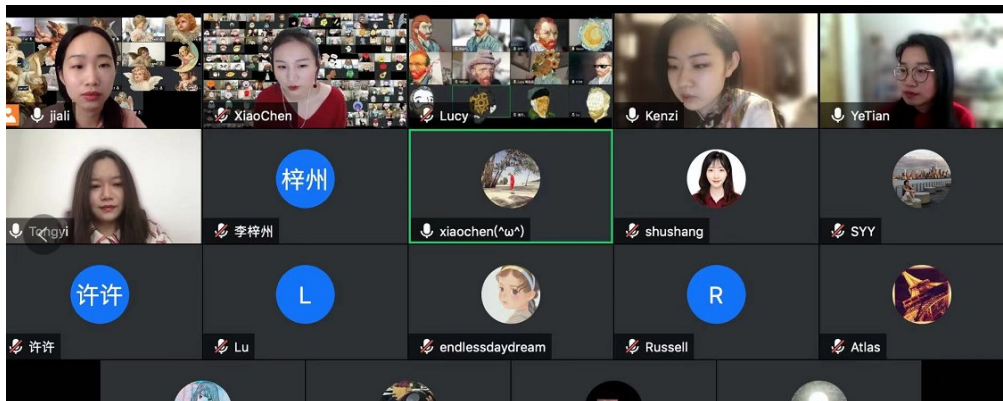
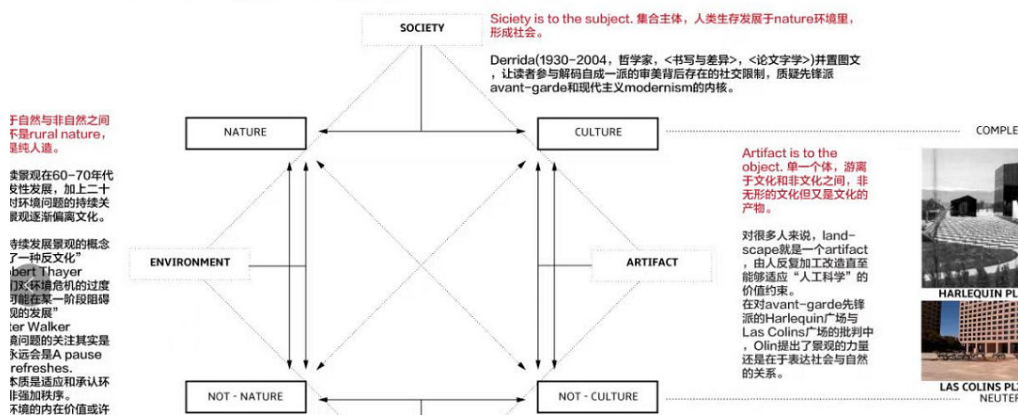
2 / 2 125%



- **CIB reading club.** We also consistently organized a series of reading activities, focusing on the classic books and theories in architecture and landscape field. Each time we gave a reading list, and assigned the participants their reading duties, and they will draw diagrams in a shared MIRO board. During the reading session, each participant will share the reading notes. We selected the books based on participants' research topics.



Landscape in the Expanded Field – Peter JACOBS



2.1.3 The Planned Activities for the Chapter in the Upcoming Year

- **Welcome party for the new semester (Done).** We planned to host a New RPGs Welcome Party and recruitment event facing the whole architecture department. The event includes warm-up games, detailed introduction of global and HKU CIB, our past and future works, the recruitment plan, and the keynote speech from dean, and other supervisors.
- **Leadership transition board meetings in 2023 (Done).** Chapter meeting for leadership transition to next generation will be conducted to decide the new committee structure



of CIBHKU. The goal is to get involved more diverse members from different departments and different backgrounds.

- **Research sharing of newly come professors in the faculty, HKU (In process).** CIBHKU serves as a platform to promote a better understanding between our professors and RPG students on both their research ideas and their teaching.
- **A series of research seminars for international scholars (In process).** We did the survey during the welcome party, and initiated a list of scholars to give seminar facing the existing RPG students in the faculty of Architecture.
- **Job hunting or research experience sharing of early career researchers.** A series of seminars will be organized to help equipping our current RPG students with necessary career related skills both on their goal establishment and horizon expanding.

2.1.4. Contact Information of the Executive Members of the Chapter

Name	Position	Email
JIALI LI	President	jli11@connect.hku.hk
QIAO LIN	Vice-president, Media & Communication	lynnq@connect.hku.hk
SOU-HAN	Vice-president, Academic Development	hankchen@connect.hku.hk
Dr. Beisi Jia	Advisor, ARC	bjiaa@hku.hk
Dr. Jianxiang Huang	Advisor, Urban	jxhuang@hku.hk
Professor K. W. Chau	Advisor, REC	hrrbckw@hku.hk