

City Centre Sustainable Housing Design Competition

Workshop 1: The Site and its Context

Date: 2 August

Time: 16:00-18:00

Venue: Online hosted by the CIB

Presenter: Francine van Tonder

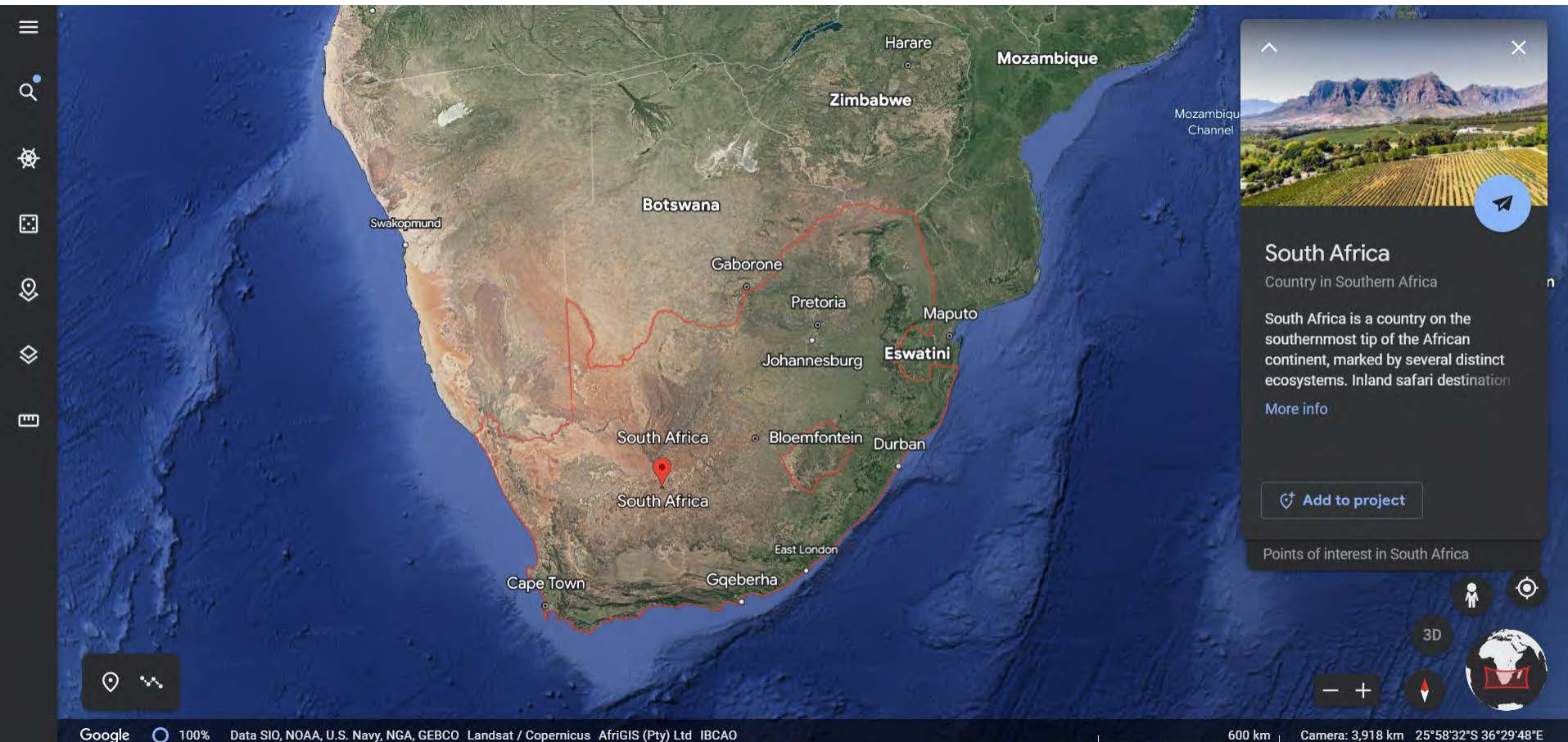


The Site and its Context

- Location
- Relationship with the city centre
- Relationship with the surroundings
- Features of the site
- Possibilities for development

Location

South Africa



Location

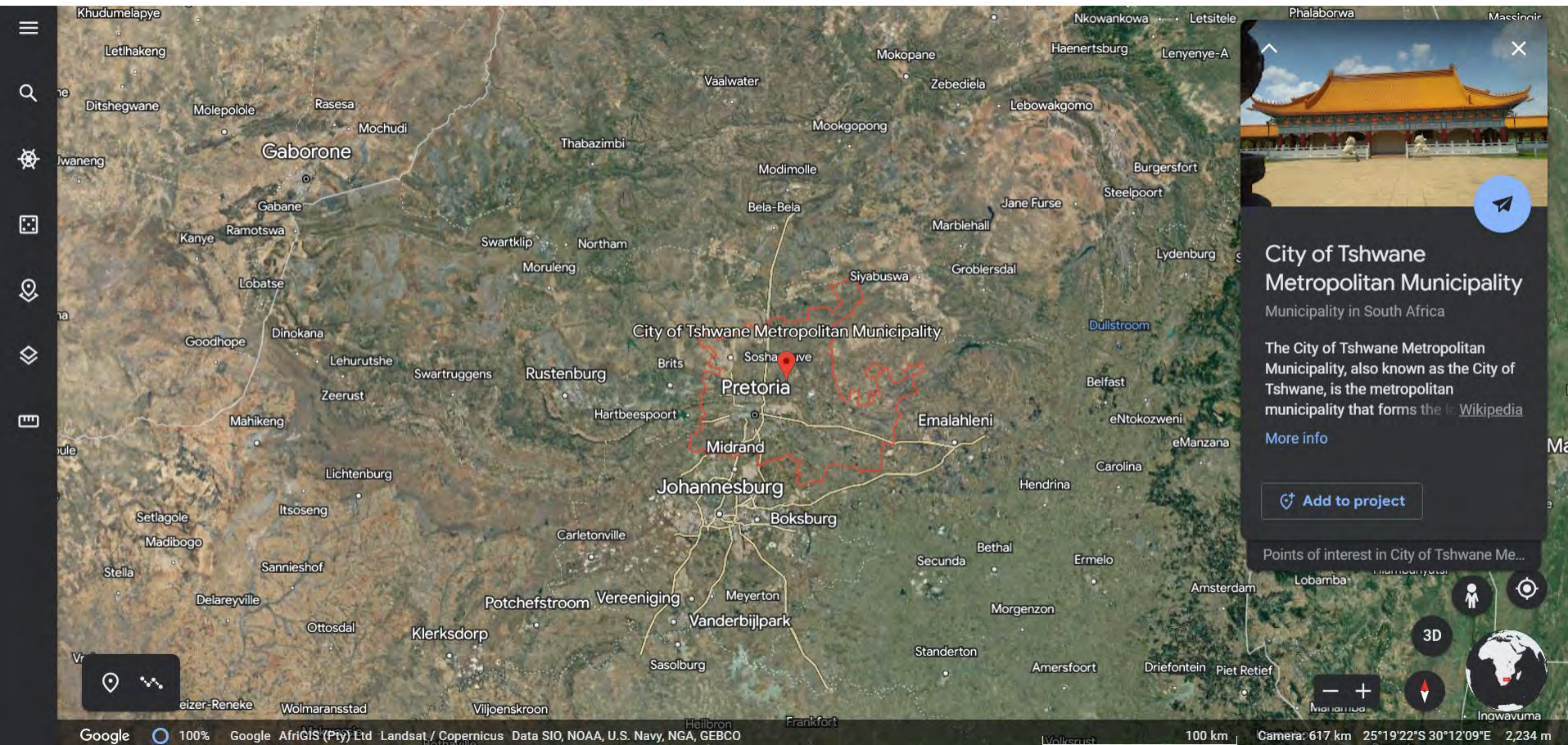
Gauteng



Source: Online, available from: <<https://earth.google.com/web/>> accessed 1 August 2023. With search prompt: Gauteng

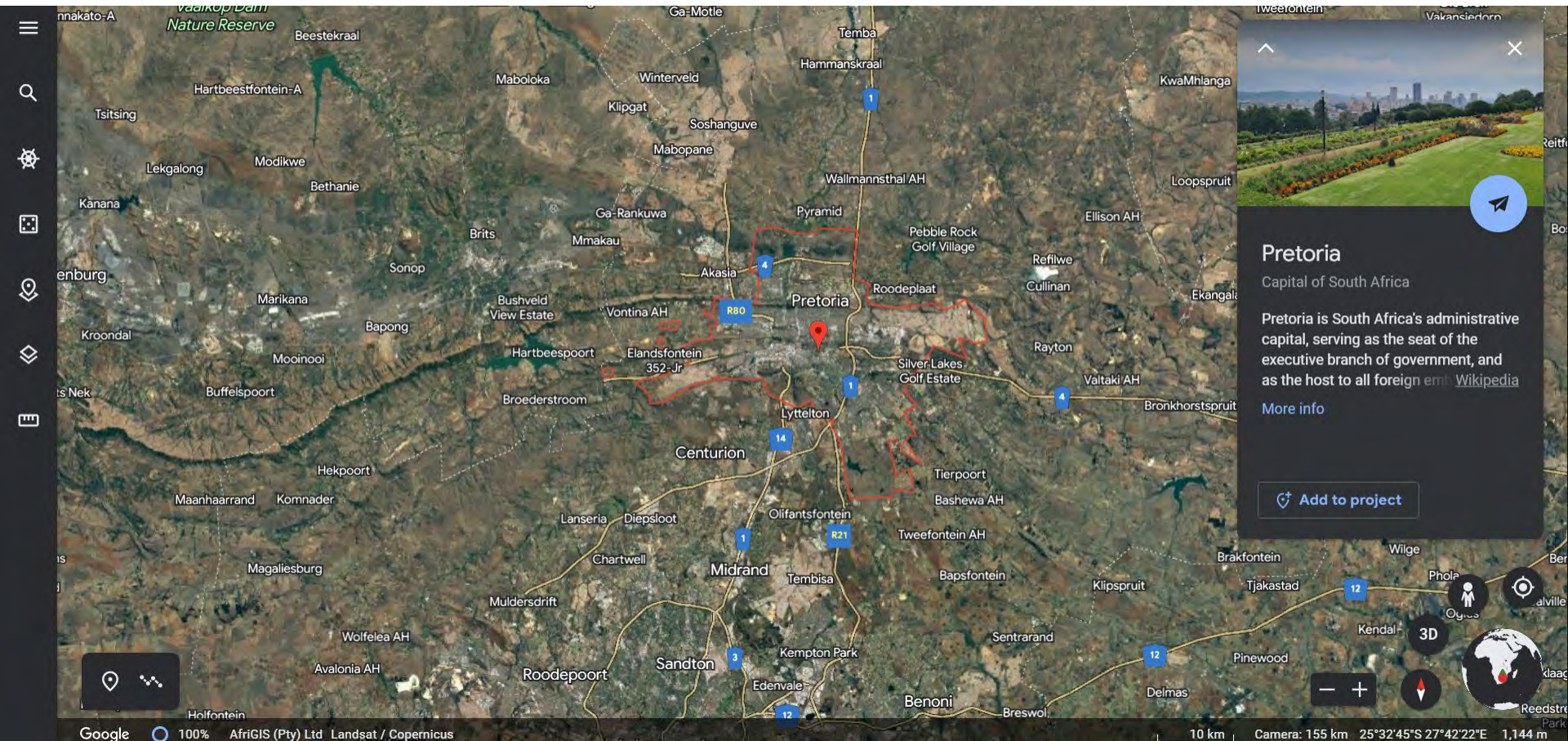
Location

City of Tshwane



Location

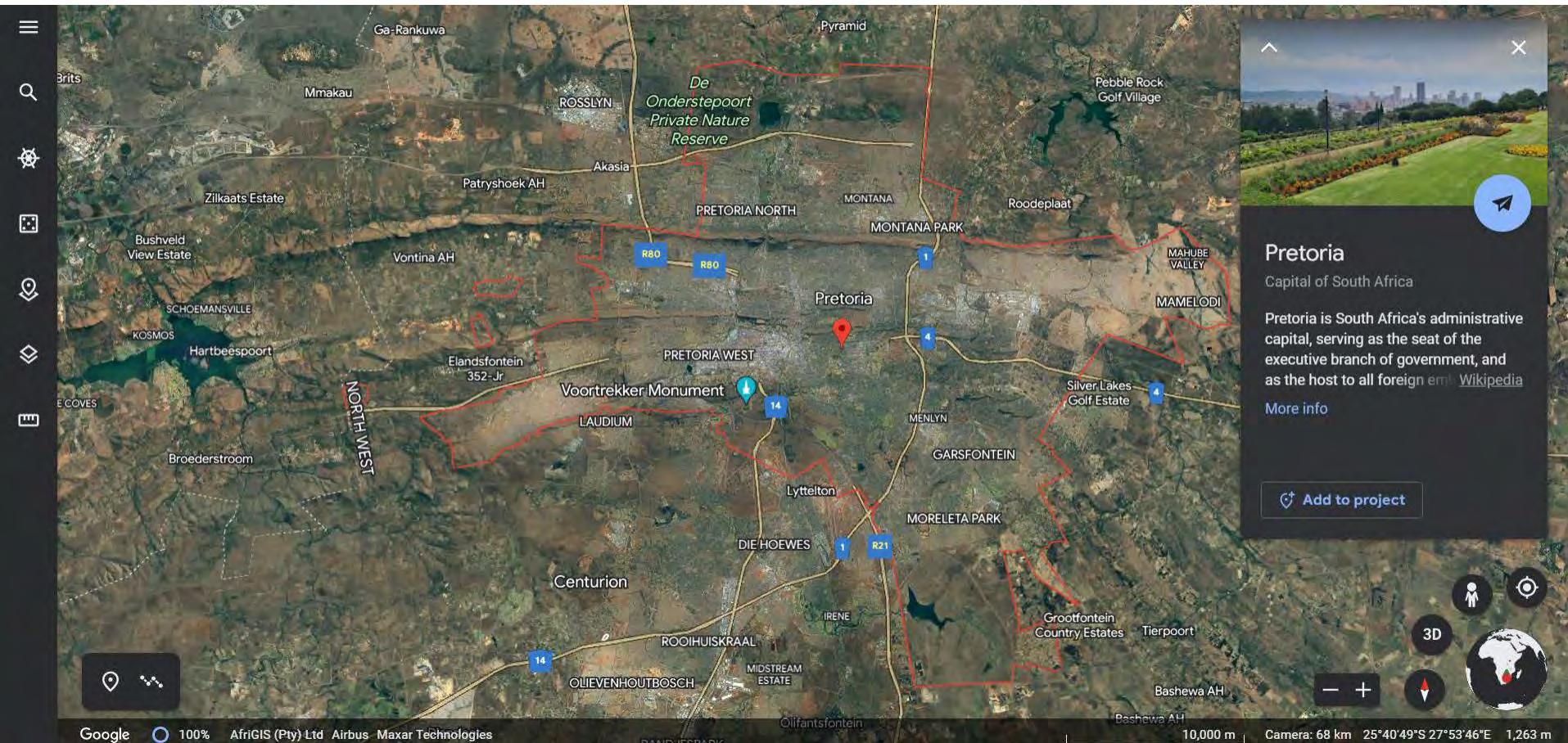
Pretoria



Source: Online, available from: <https://earth.google.com/web/> accessed 1 August 2023. With search prompt: Pretoria

Location

Pretoria ... closer



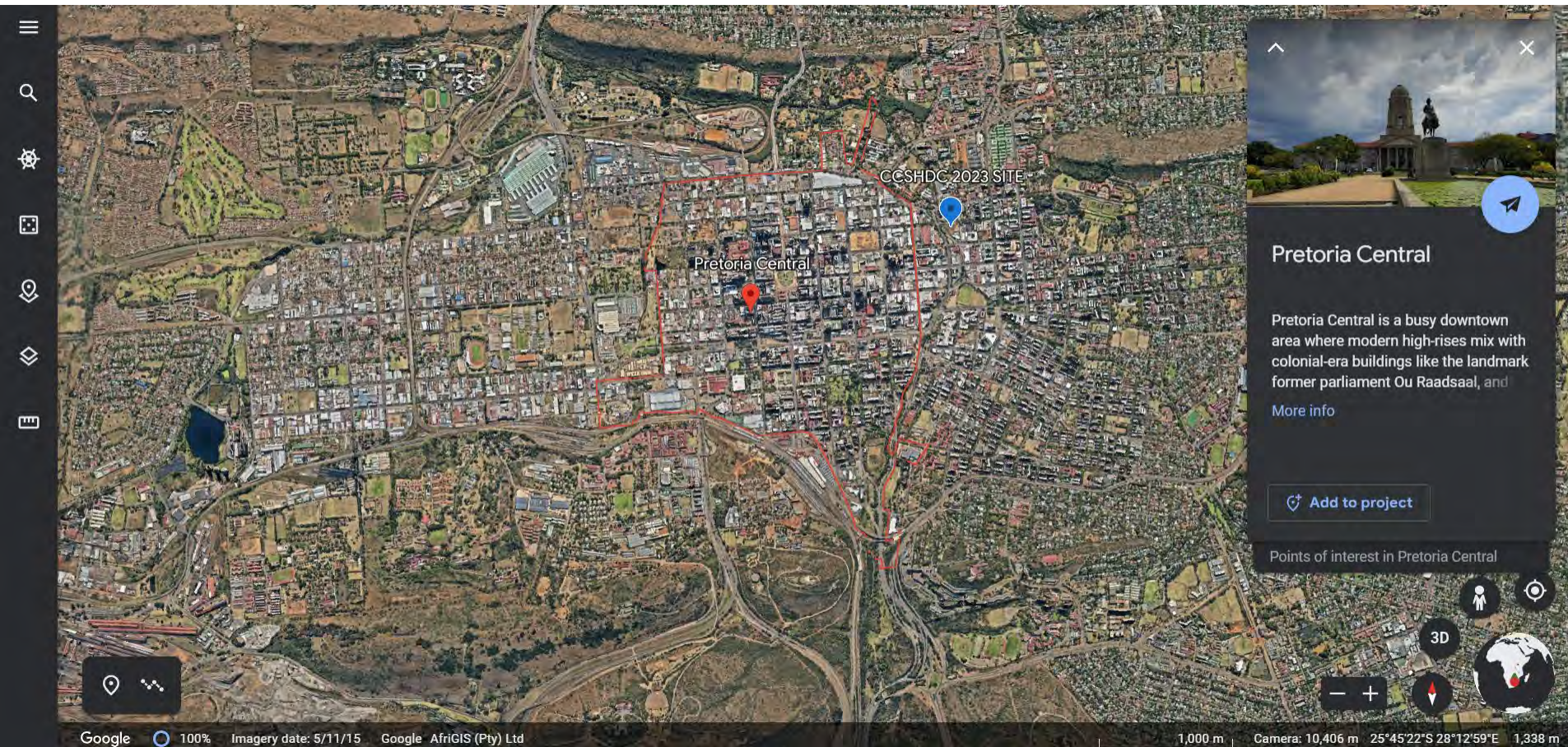
Location

Pretoria central



Location

Pretoria central ... closer



Source: Online, available from: <https://earth.google.com/web/> accessed 1 August 2023. With search prompt: Pretoria central

Relationship with the city centre

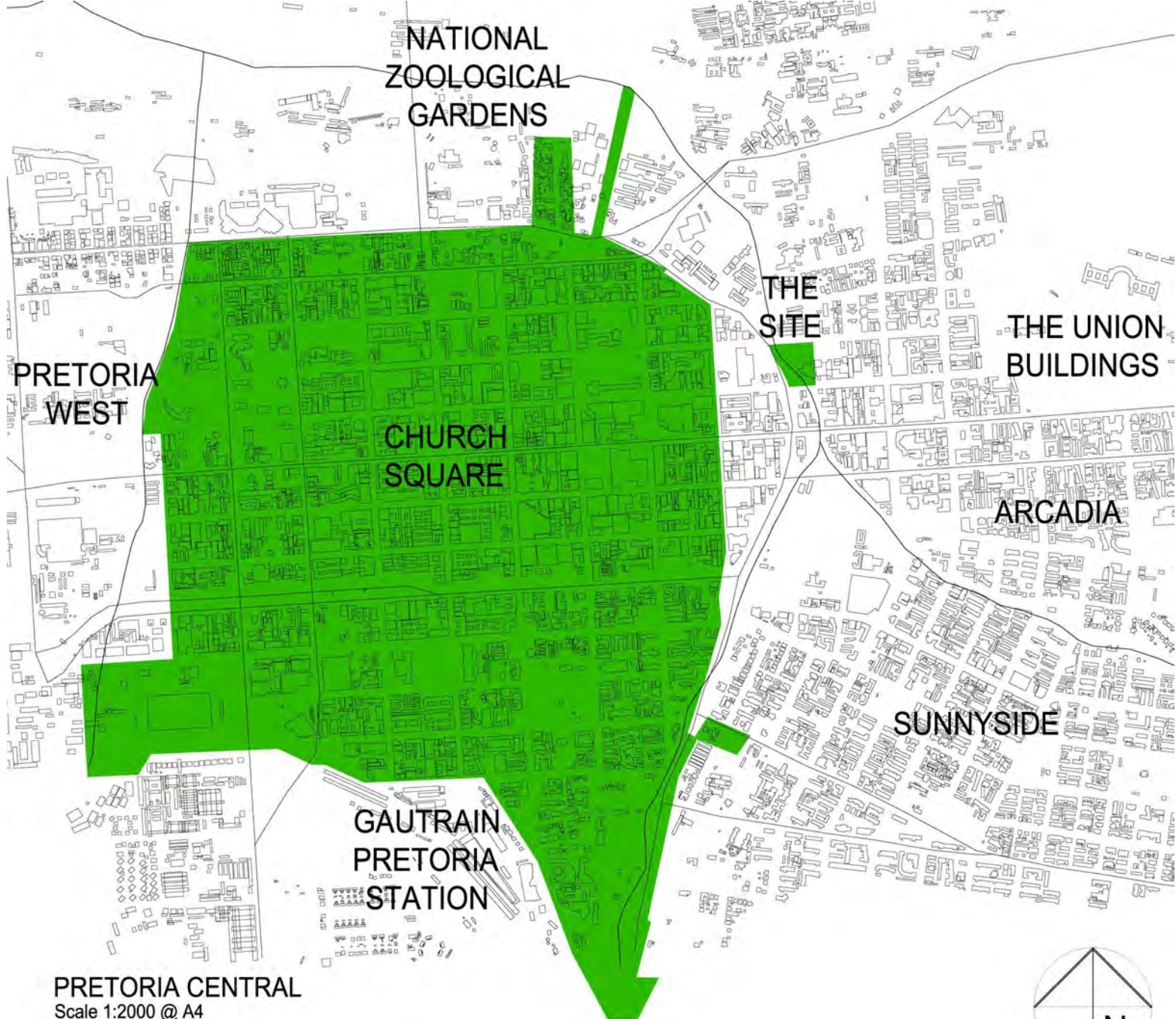
Pretoria partial figure ground



Relationship with the city centre

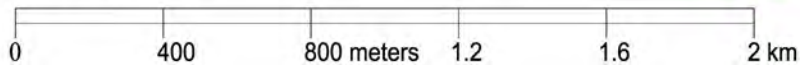
Pretoria central on partial figure ground





PRETORIA CENTRAL

Scale 1:2000 @ A4



Relationship with the city centre

The Site



Source: Online, available from: <<https://earth.google.com/web/>> accessed 1 August 2023.

Relationship with the city centre

The Site



Source: Online, available from: <<https://earth.google.com/web/>> accessed 1 August 2023.

Relationship with the surroundings

The Site

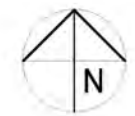
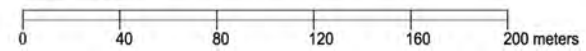




LOCALITY PLAN
 Scale 1:200 @ A4

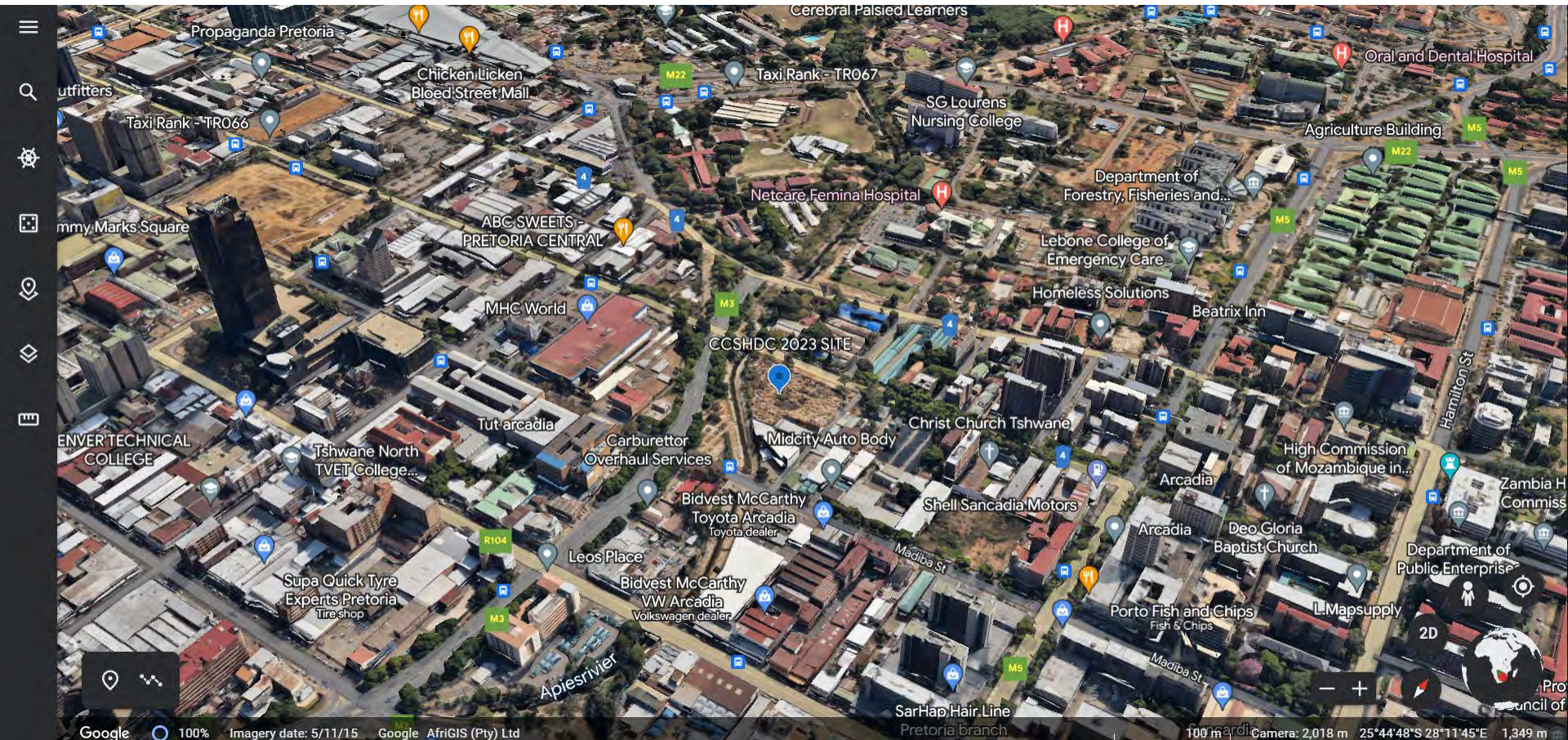


LOCALITY SECTION DIAGRAM A
 Scale 1:2000 @ A4



Relationship with the surroundings

The Site



Relationship with the surroundings

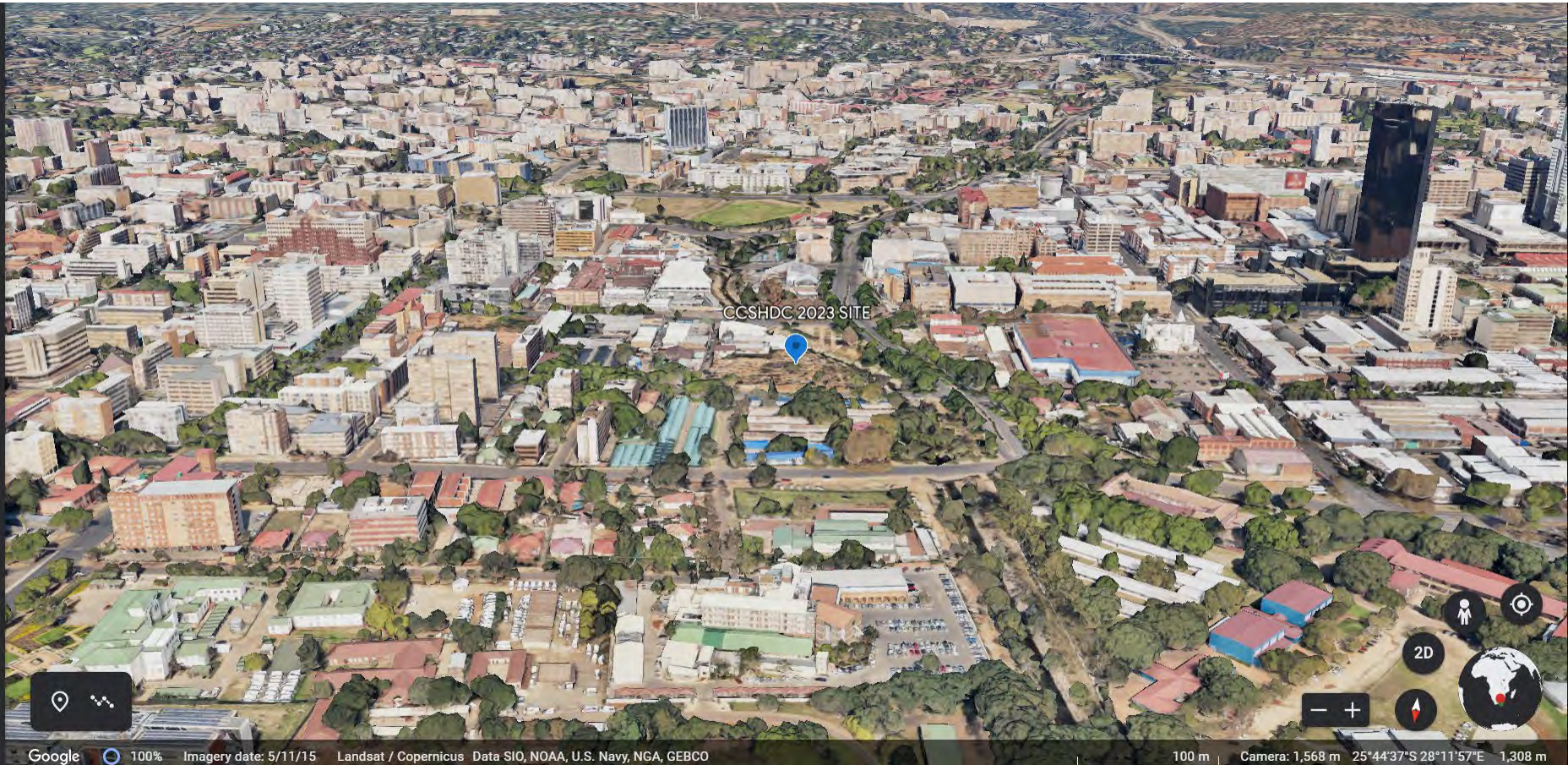
EAST



Source: Online, available from: <<https://earth.google.com/web/>> accessed 1 August 2023.

Relationship with the surroundings

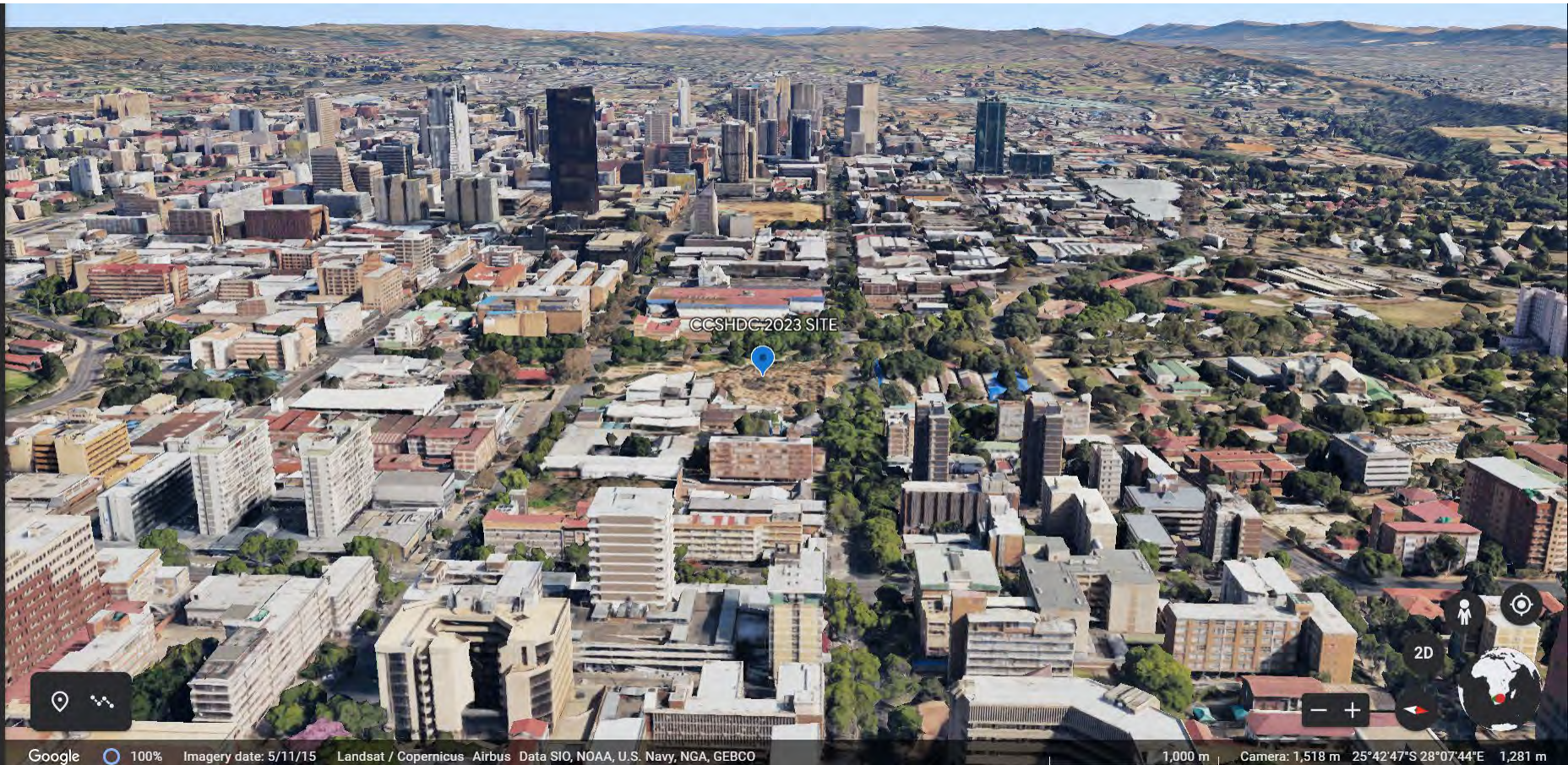
SOUTH



Source: Online, available from: <<https://earth.google.com/web/>> accessed 1 August 2023.

Relationship with the surroundings

WEST



Source: Online, available from: <<https://earth.google.com/web/>> accessed 1 August 2023.

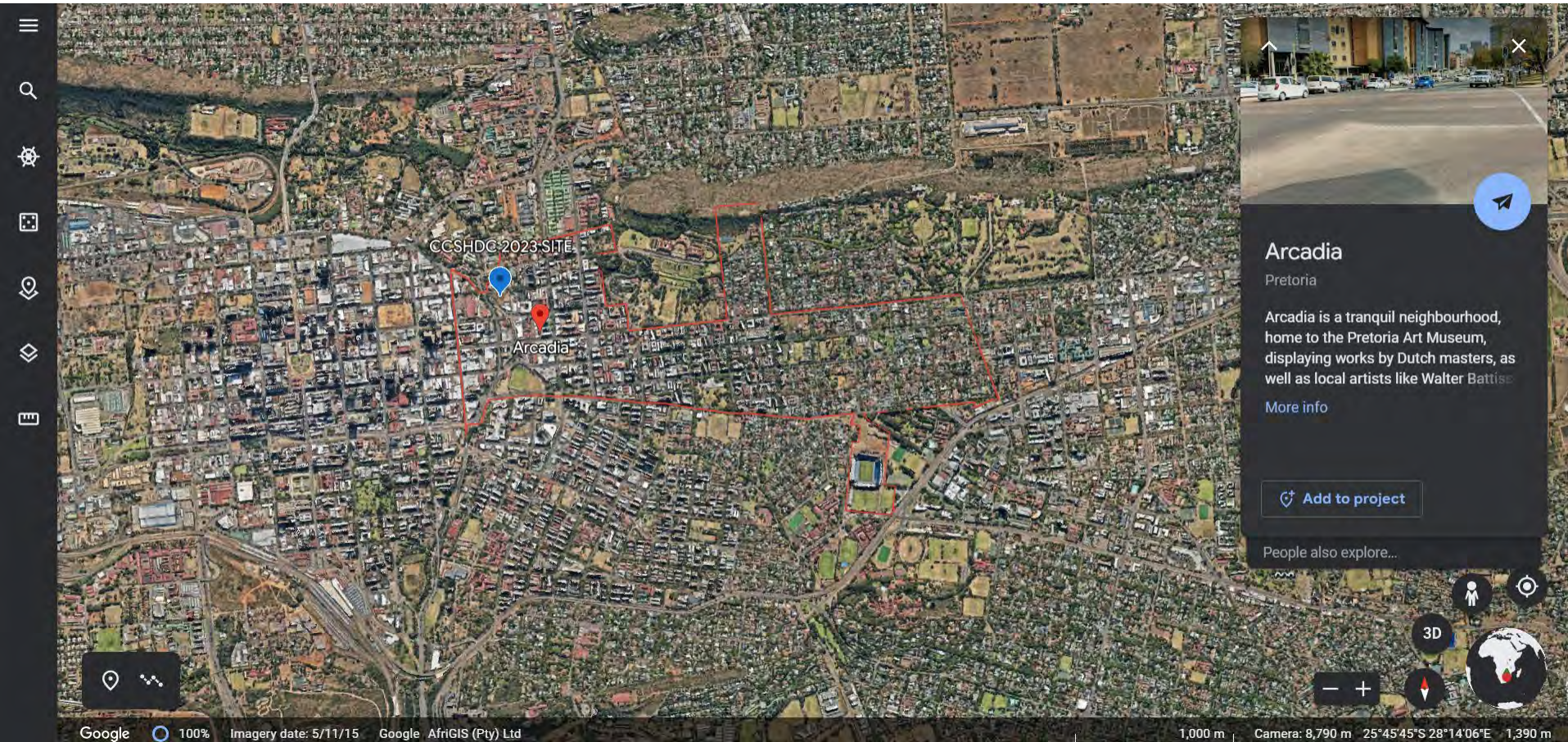
Relationship with the surroundings

NORTH



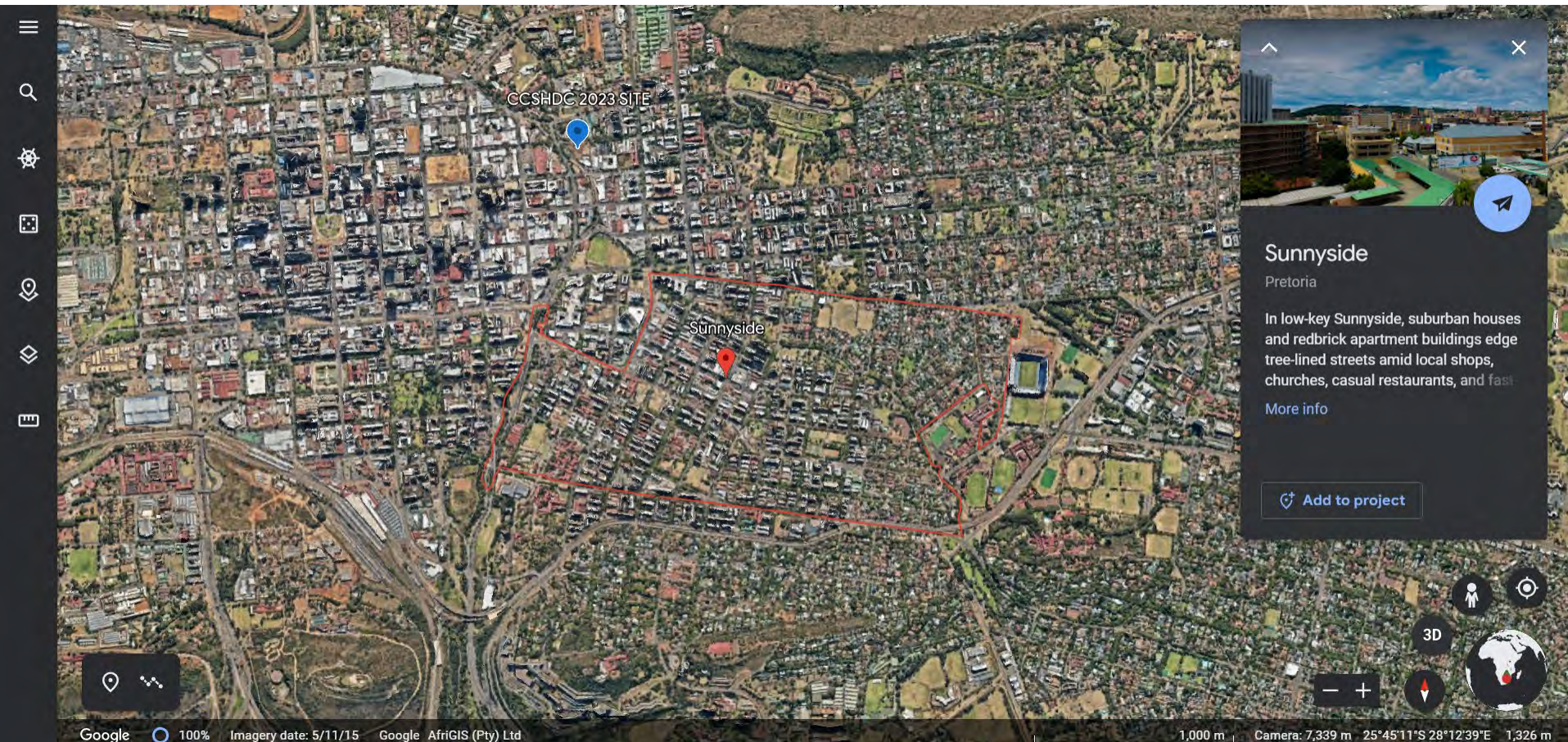
Relationship with the surroundings

Arcadia



Relationship with the surroundings

Sunnyside



Sunnyside
Pretoria

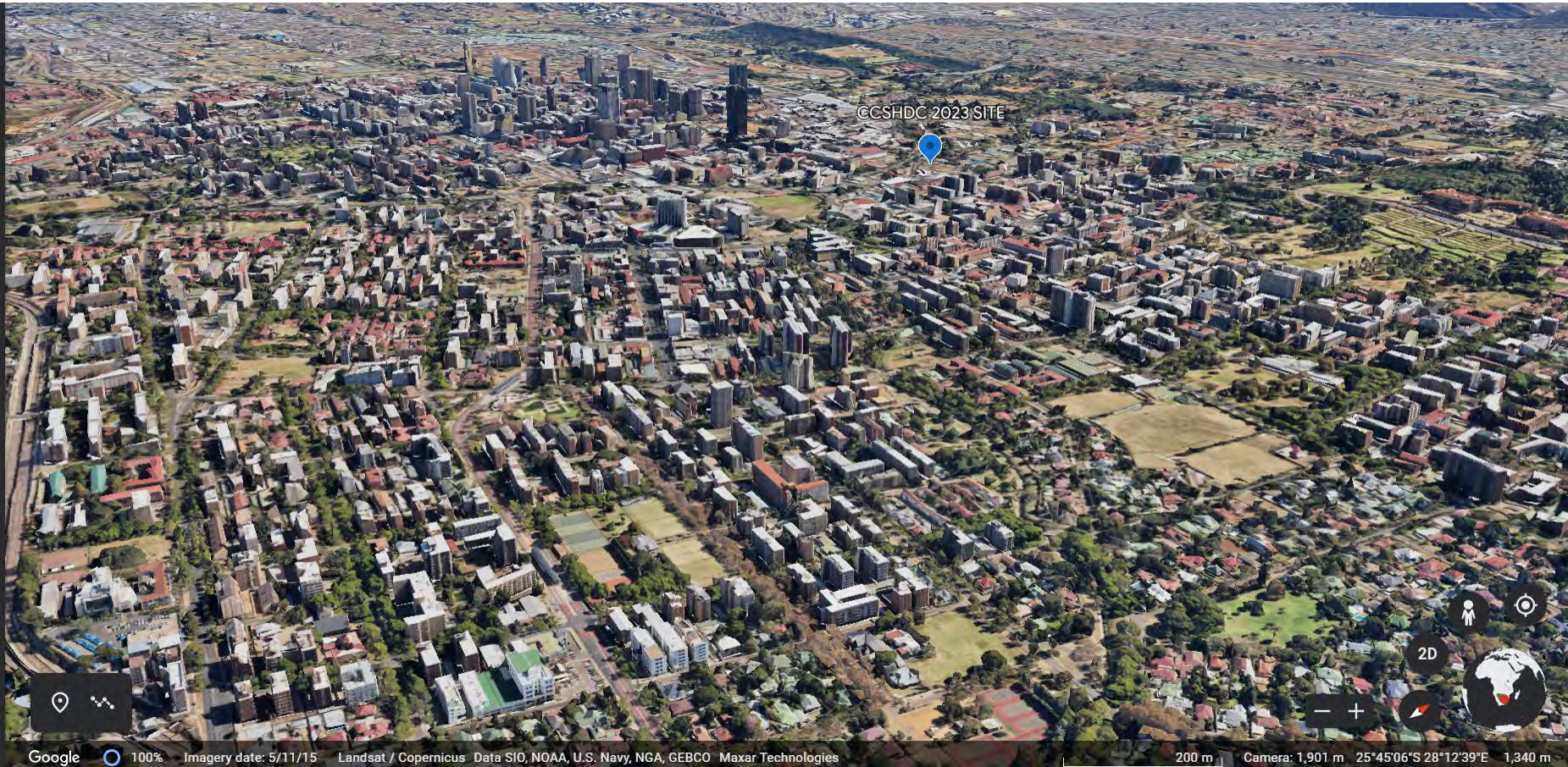
In low-key Sunnyside, suburban houses and redbrick apartment buildings edge tree-lined streets amid local shops, churches, casual restaurants, and fast

[More info](#)

[Add to project](#)

Relationship with the surroundings

Arcadia and Sunnyside



Source: Online, available from: <https://earth.google.com/web/> accessed 1 August 2023. With search prompt: Sunnyside

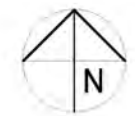
Features of the site



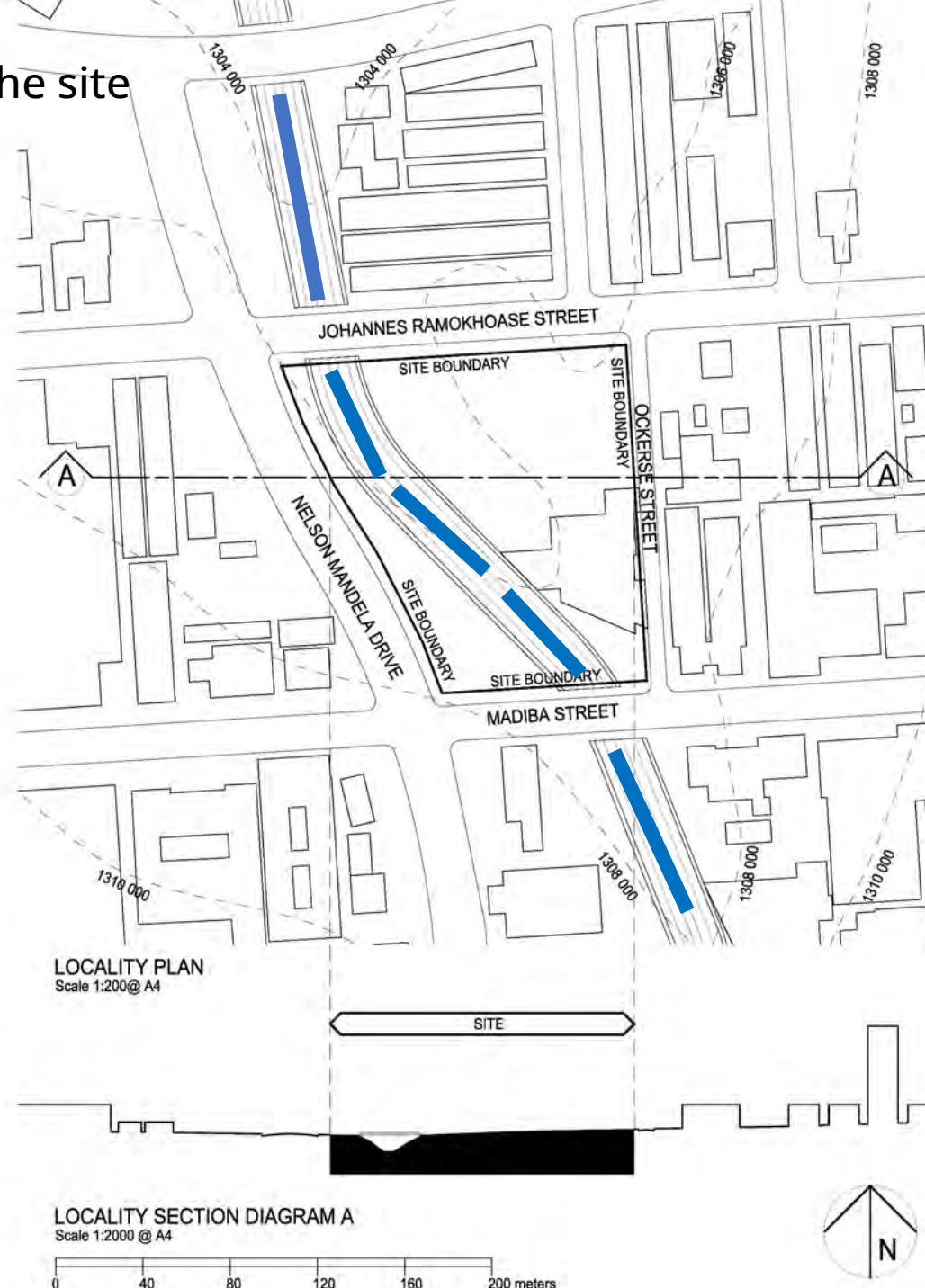
LOCALITY PLAN
Scale 1:200 @ A4

LOCALITY SECTION DIAGRAM A
Scale 1:200 @ A4

0 40 80 120 160 200 meters



Features of the site



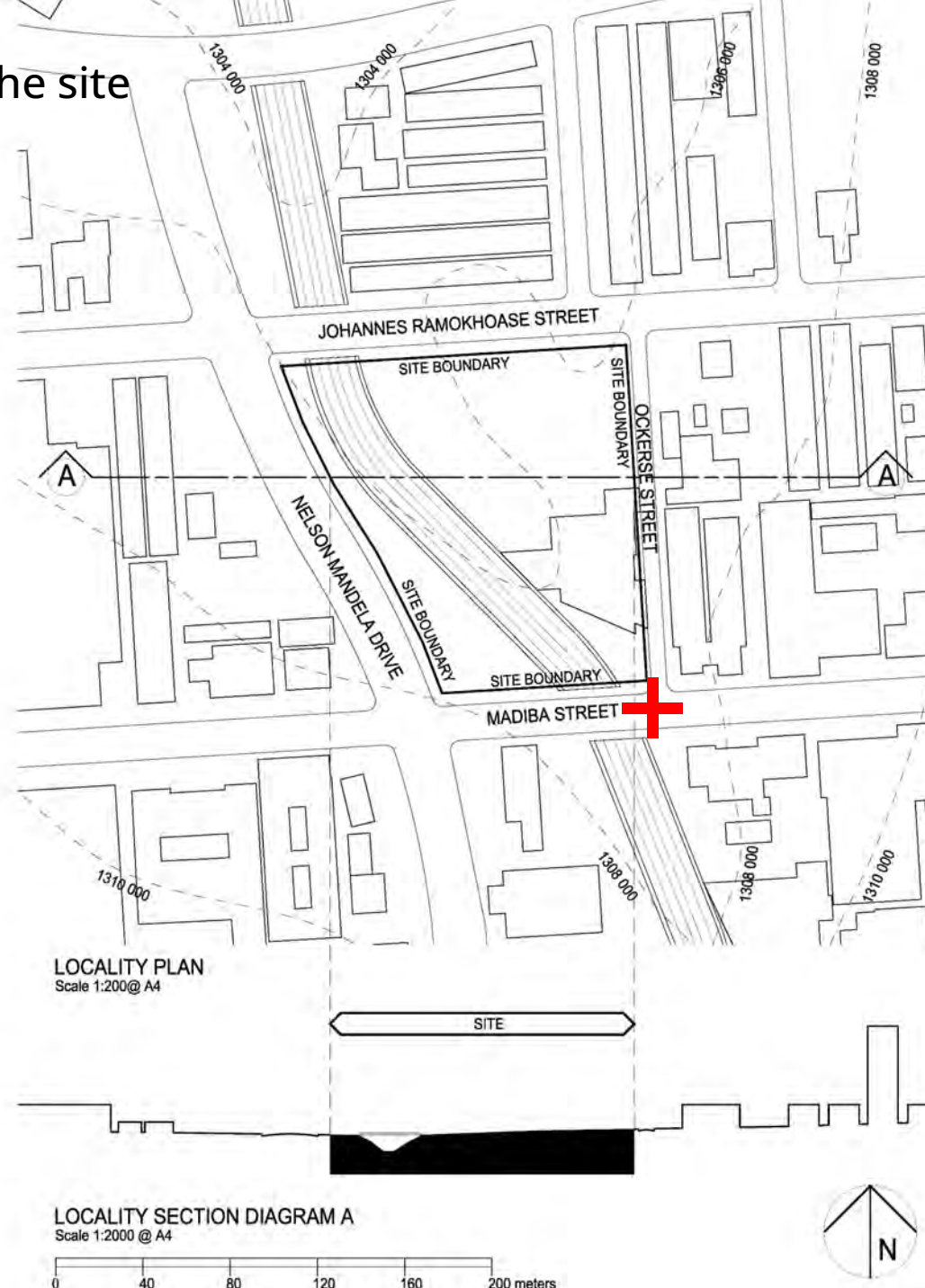


Source: Myburgh, J, 2014, Urban swimming. The design of a public swimming pool for Pretoria Central that links to a proposed walkway on the Aapies River Canal. TUT.



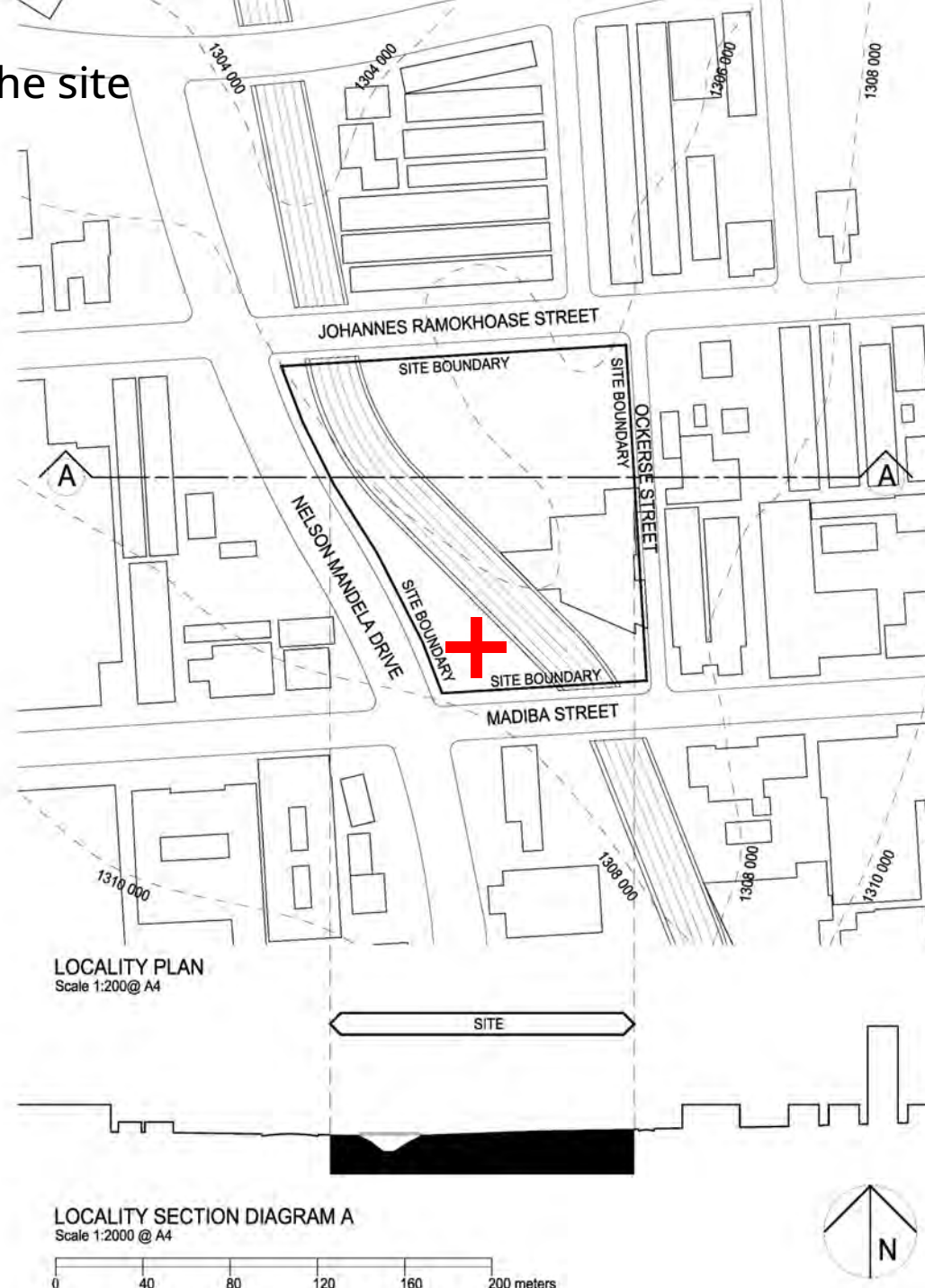
Source: Myburgh, J, 2014, Urban swimming. The design of a public swimming pool for Pretoria Central that links to a proposed walkway on the Aapies River Canal. TUT.

Features of the site



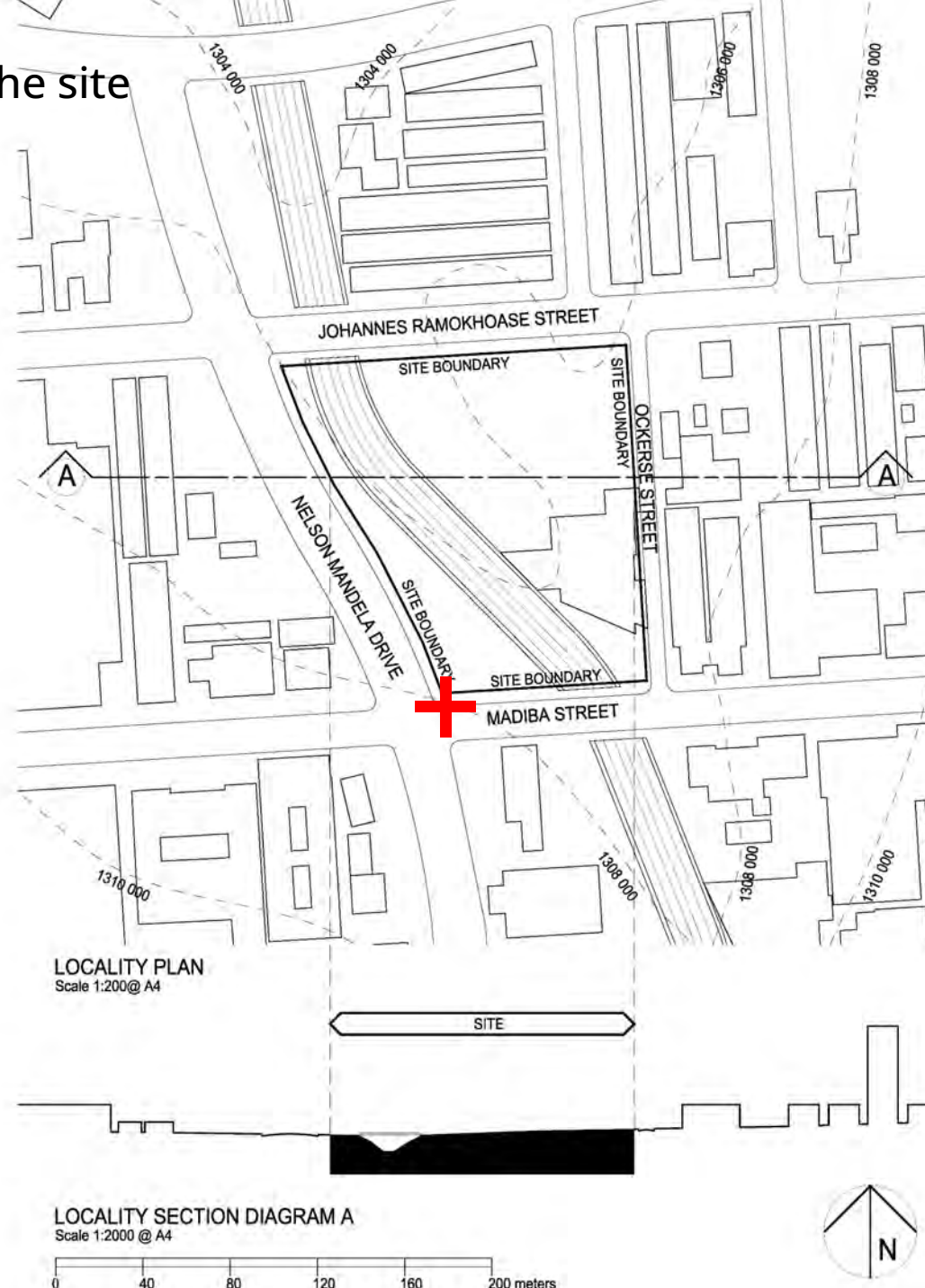


Features of the site



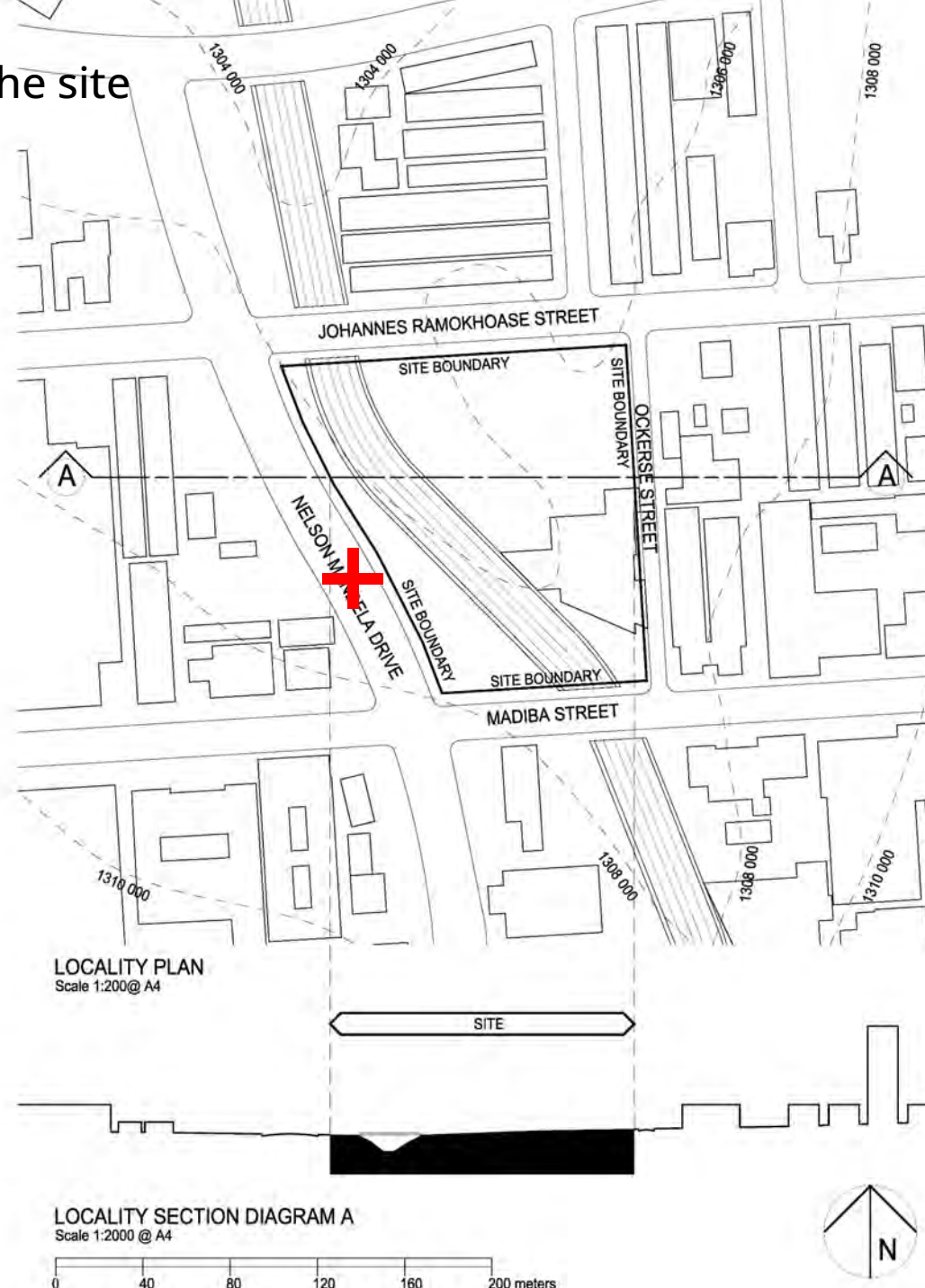


Features of the site



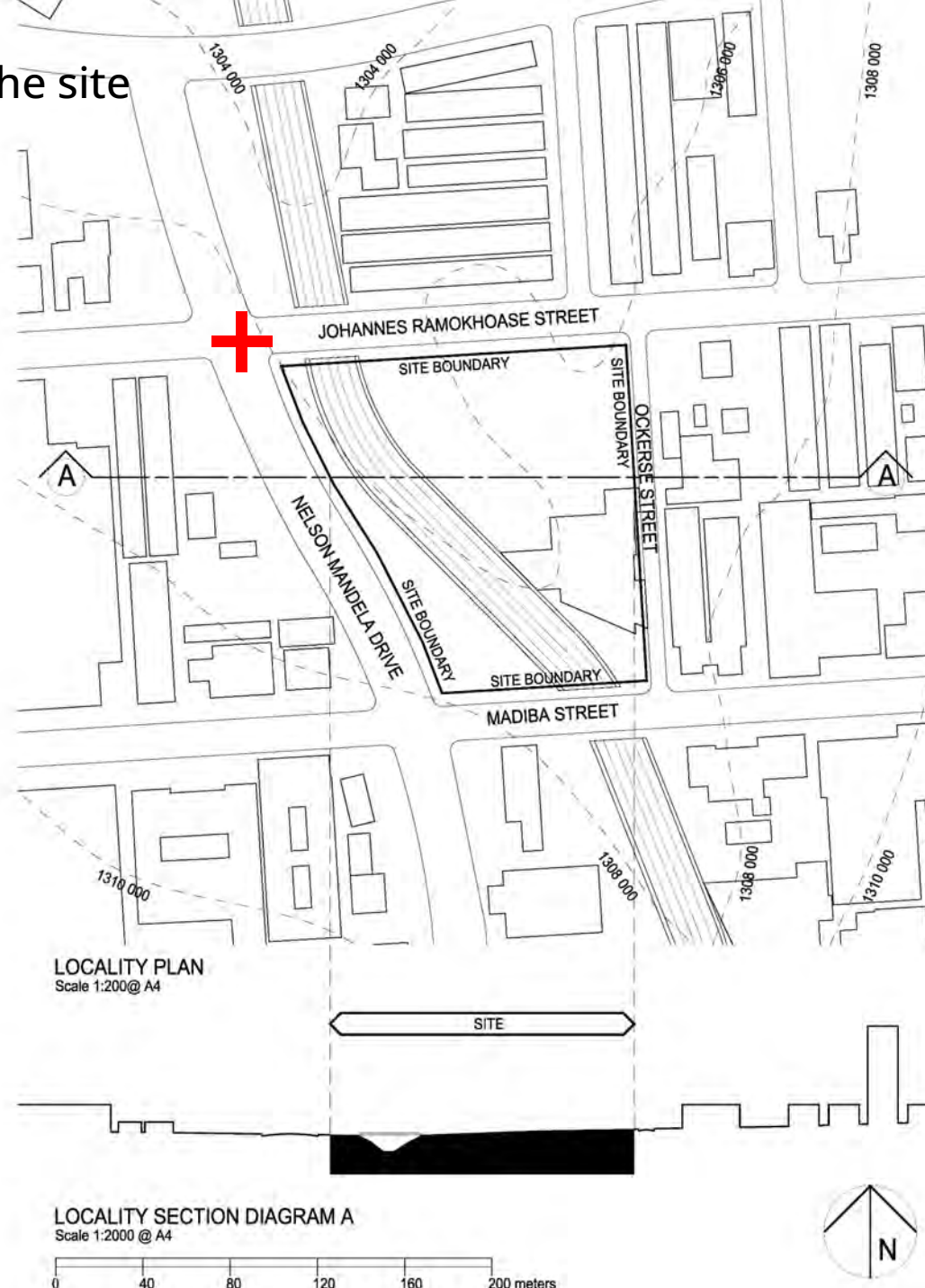


Features of the site





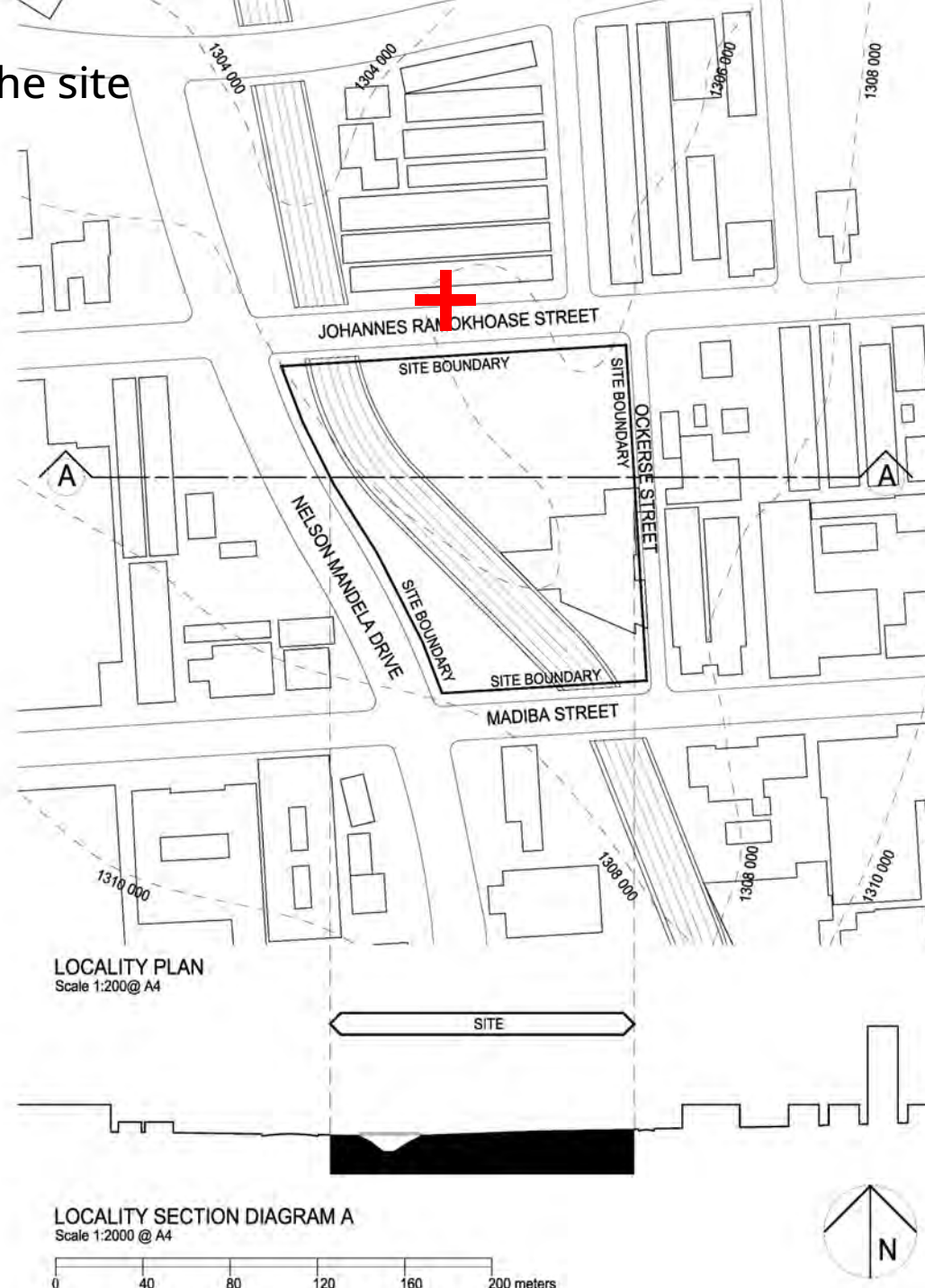
Features of the site





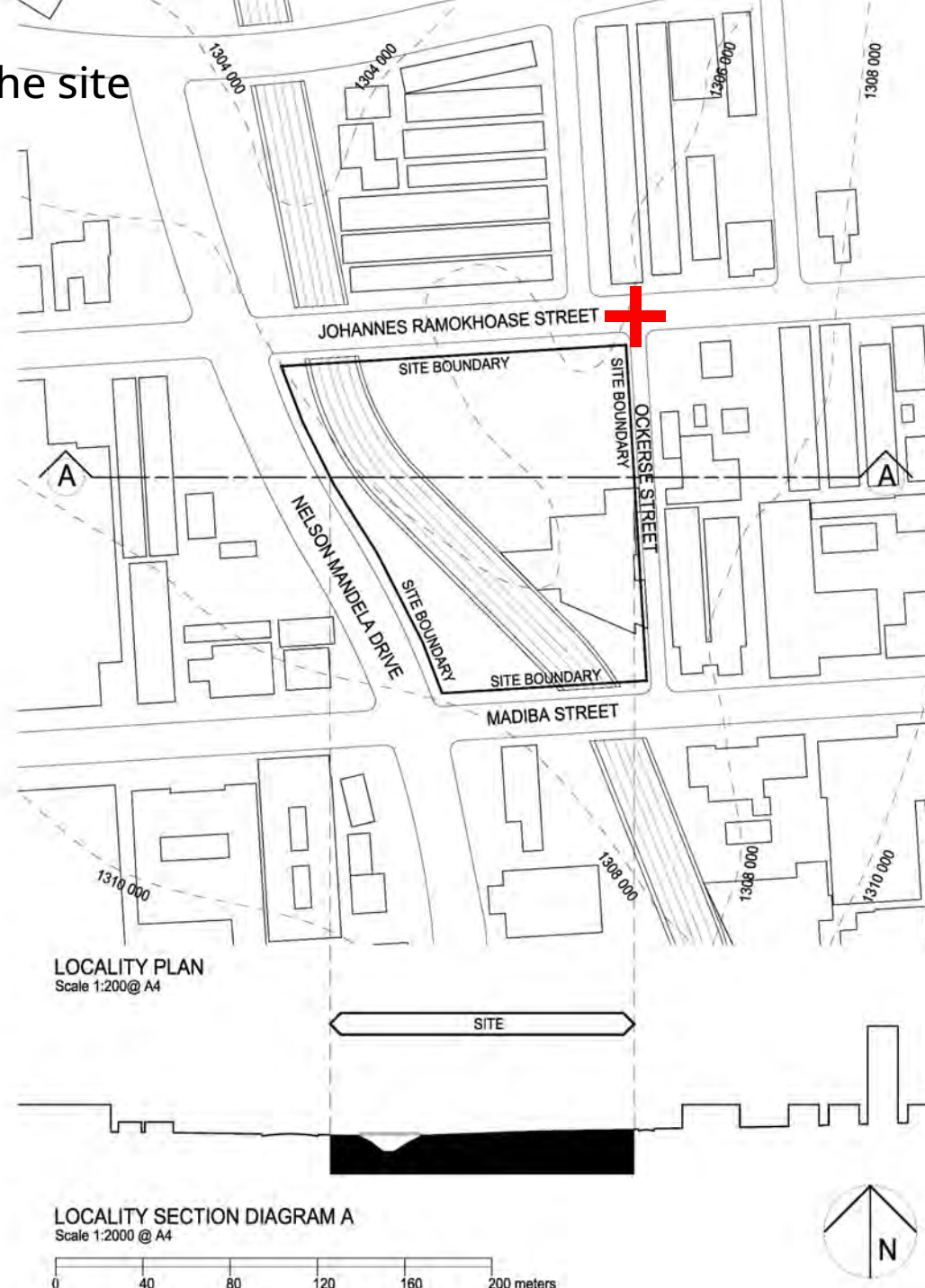


Features of the site





Features of the site



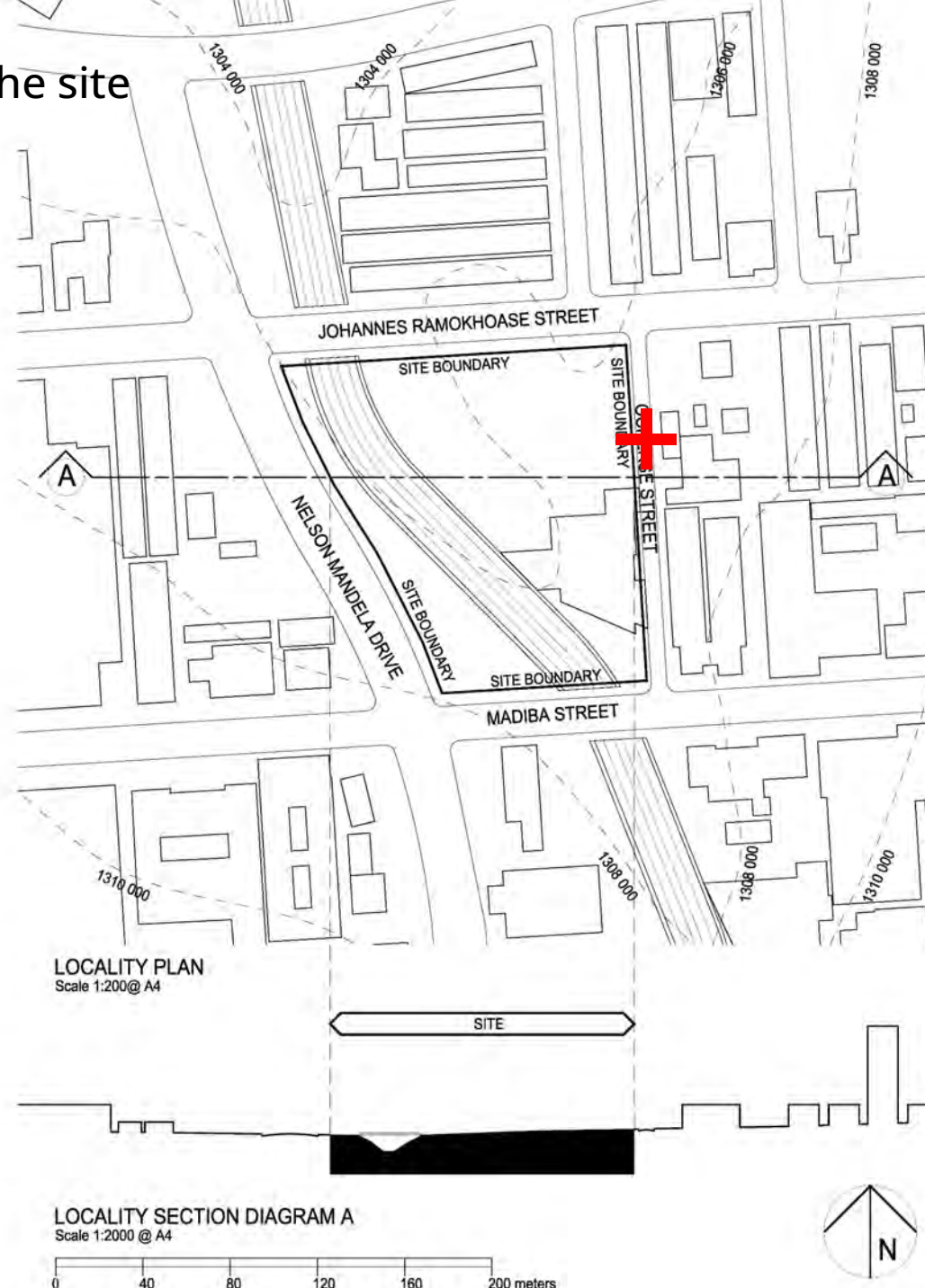
JOHANNES RAMOKHOASE ST

OCKERSE ST



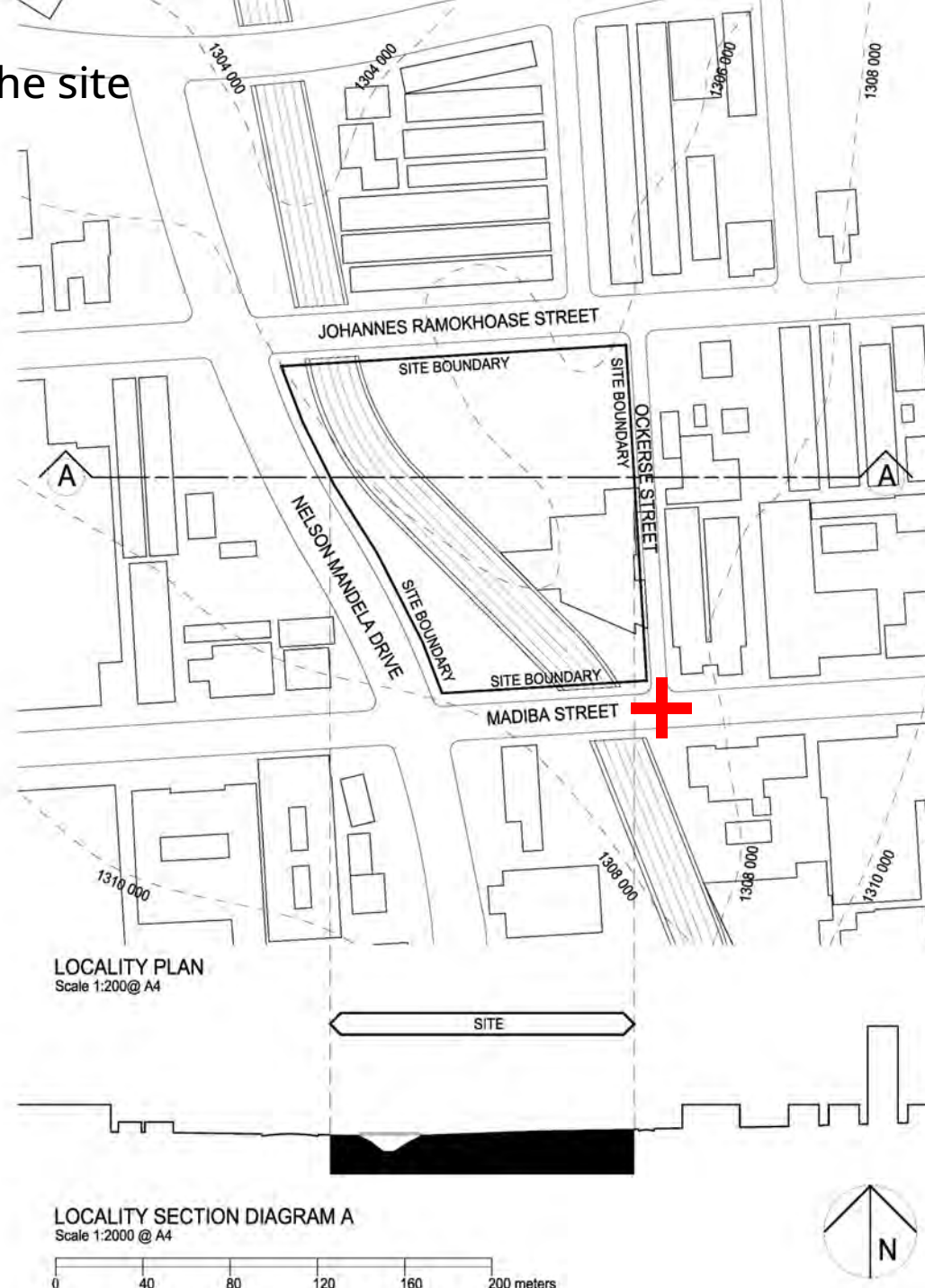


Features of the site





Features of the site

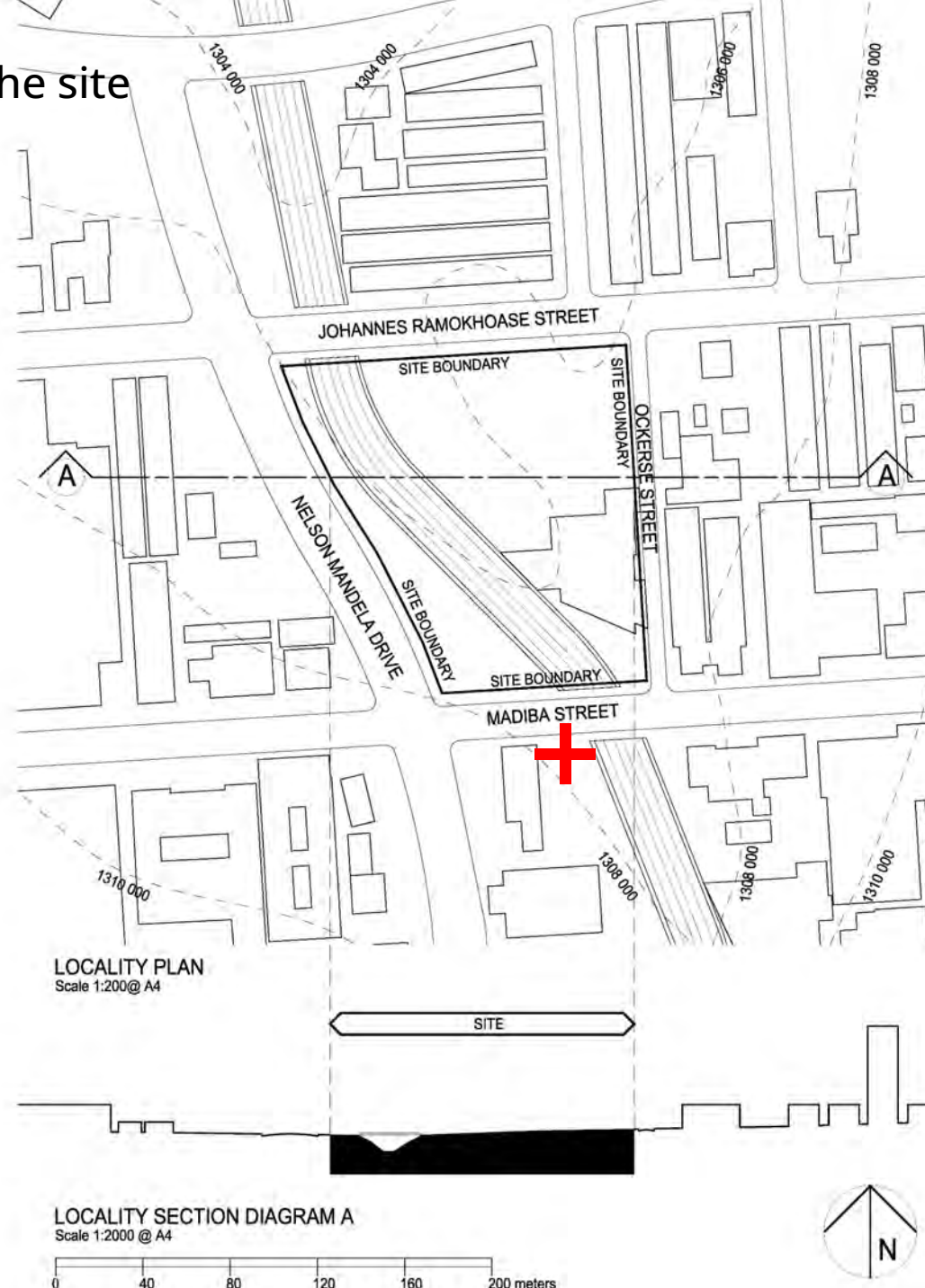




KANUGA
AUTO
PARTS
& SERVICE CENTRE

Beck's

Features of the site





KANUG

CENTRE
ALL PARTS FOR
LAND & TRUCKS

KANUG AUTO PARTS



Go here: <https://cibworld.org/city-centre-sustainable-design-housing-competition-workshops/>



Sustainable Design Housing competition

The City Centre Sustainable Design Housing competition in South Africa is a joint initiative of the CIB Working Commissions in Architectural Design and Management (W096), Smart and Sustainable Built Environments (W116), and Construction in Developing Countries (W107); and the [Future of the City Centre International Network](#) as part of CIB's 70th anniversary.

The City Centre Sustainable Design Housing Competition (CCSDHC) is for teams of third year architectural students, and students in other disciplines at ten South African universities, and is sponsored by the [National Home Builders Registration Council \(NHBRC\)](#) in South Africa and [Boogertman and Partners](#). It is being hosted by the [University of Pretoria, Department of Architecture](#).

The competition brief can be downloaded [here](#)

Competition workshops

In order to support the competition, a series of workshops will be held in August 2023 as a part of supporting

Members	56
News	497
newsletter	14
People	39
Proceedings	2
Publications	91
Recognised Journal	13
Student Chapters	60
Surveys	1
Uncategorized	56
WBC Conversations	9
Webinars	25
News & Events	
August 2023	2
July 2023	5
June 2023	14
May 2023	6
April 2023	9

Go here: <https://cibworld.org/>

Home - CIB

cibworld.org

Member Login | [in](#) [twitter](#) [youtube](#)

cib International Council for Research and Innovation in Building and Construction

[Home](#) [About](#) [Members](#) [Commissions](#) [Future Leaders](#) [Publications](#) [News & Events](#) [Contact](#)

CIB World Building Congress 2019 Hong Kong

“Through my association with the CIB since 1994, I have developed the very best relationships with those I have collaborated and worked with over the years.”

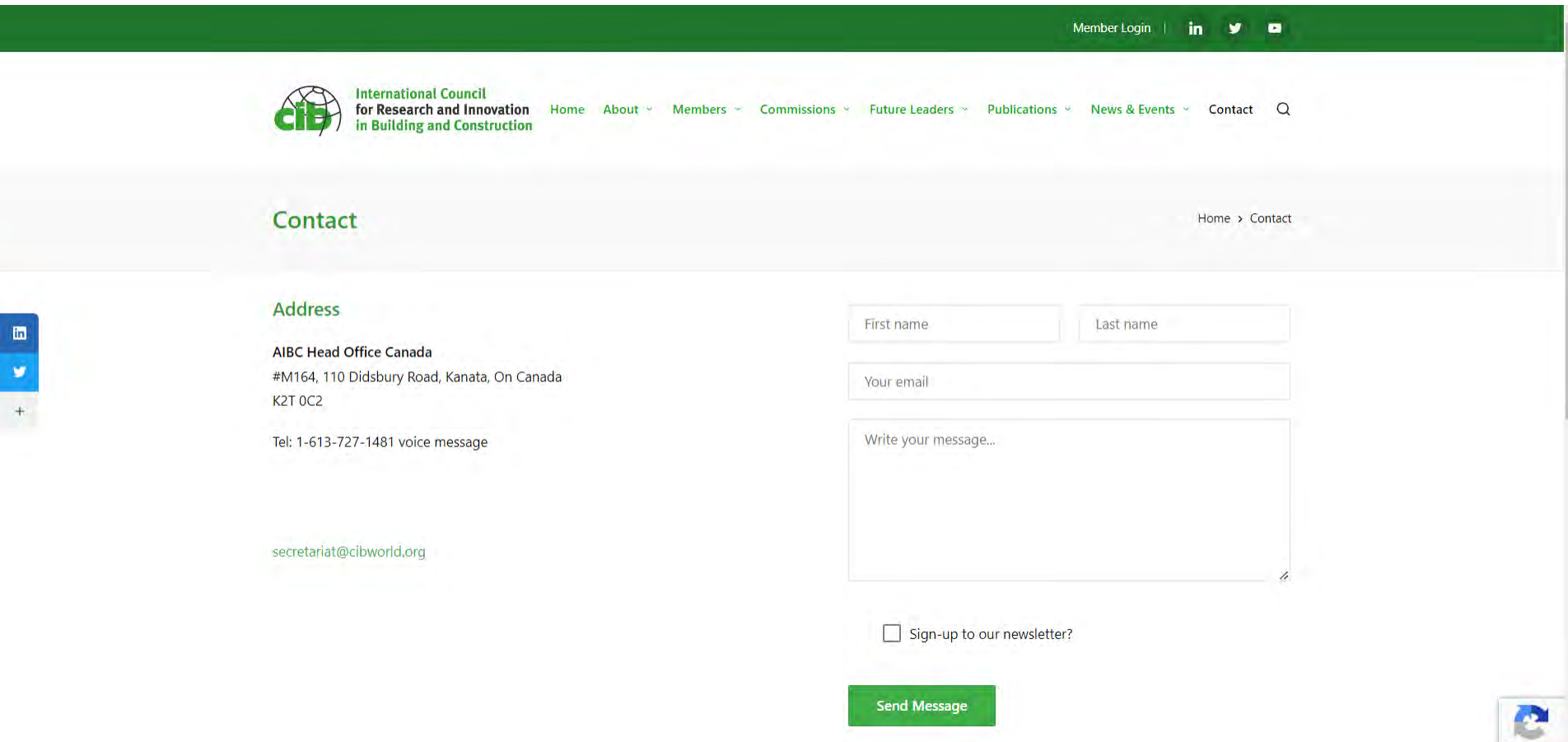
Find out how membership can benefit you!

Collaborating for Innovation in the Built Environment

The International Council for Research and Innovation in Building and Construction (Conseil International du Bâtiment) is the worldwide network of building and construction experts who improve their performance through international co-operation and information exchange with their peers to improve the quality and impact of research and innovation activities in the sector. CIB was established in 1953 with United Nations' assistance and holds special UN consultative status.


Introducing the CIB
November 2020

Go here: <https://cibworld.org/contact>



The screenshot shows the contact page of the International Council for Research and Innovation in Building and Construction (CIB). The page features a green header with the CIB logo and navigation menu. The main content area includes contact information for the AIBC Head Office Canada and a contact form with fields for first name, last name, email, and a message box. There is also a checkbox for signing up to the newsletter and a 'Send Message' button.

Member Login | [in](#) [twitter](#) [youtube](#)

 **International Council
for Research and Innovation
in Building and Construction** [Home](#) [About](#) [Members](#) [Commissions](#) [Future Leaders](#) [Publications](#) [News & Events](#) [Contact](#) [Q](#)

Contact

[Home](#) > [Contact](#)

Address

AIBC Head Office Canada
#M164, 110 Didsbury Road, Kanata, On Canada
K2T 0C2

Tel: 1-613-727-1481 voice message

secretariat@cibworld.org

First name Last name

Your email

Write your message...

Sign-up to our newsletter?

[Send Message](#)

Go here: <https://cibworld.org/commissions/>

Member Login | [in](#) [TW](#) [YT](#)



International Council
for Research and Innovation
in Building and Construction

[Home](#) [About](#) [Members](#) [Commissions](#) [Future Leaders](#) [Publications](#) [News & Events](#) [Contact](#) [Q](#)

Commissions

[Home](#) > [Commissions](#)

These are the core of our work. A CIB Commission is a worldwide network of experts in a defined scientific area who meet regularly and who collaborate in international projects and exchange information on a voluntary basis. A Commission can be a Task Group (TG) with a limited lifetime, scope and objectives, or a Working Commission (W) with a longer-term 'permanent' status and a broader programme, scope and objectives.

CIB TASK GROUPS

- TG81 – Global Construction Data
- TG88 – Smart Cities
- TG91 – Infrastructure
- TG96 – Accelerating Innovation in Construction
- TG97 – Nature-Based Solutions for Climate Resilient Buildings and Communities
- TG124 – Net Zero Carbon Building Design and Construction Practices **New 2022!**

CIB WORKING COMMISSIONS

- W014 – Fire Safety
- W023 – Wall Structures
- W040 – Heat and Moisture transfer in Buildings

Go here: <https://cibworld.org/commissions/>

Member Login | [in](#) [t](#) [v](#)



International Council
for Research and Innovation
in Building and Construction

[Home](#) [About](#) [Members](#) [Commissions](#) [Future Leaders](#) [Publications](#) [News & Events](#) [Contact](#) [Q](#)

W096 – Architectural Design and Management

[Home](#) > [Commissions](#) > [W096 – Architectural Design and Management](#)

W116 – Smart and Sustainable Built Environments

[Home](#) > [Commissions](#) > [W116 – Smart and Sustainable Built Environments](#)

W107 – Construction in Developing Countries

[Home](#) > [Commissions](#) > [W107 – Construction in Developing Countries](#)