



---

---

---

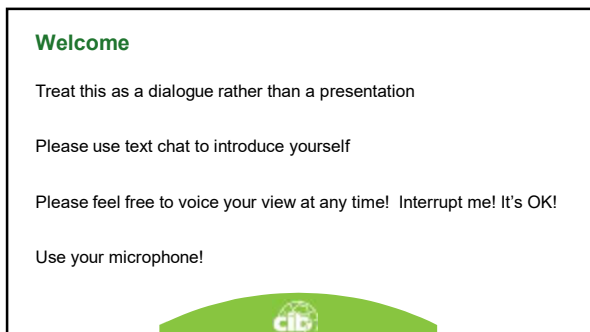
---

---

---

---

---



---

---

---

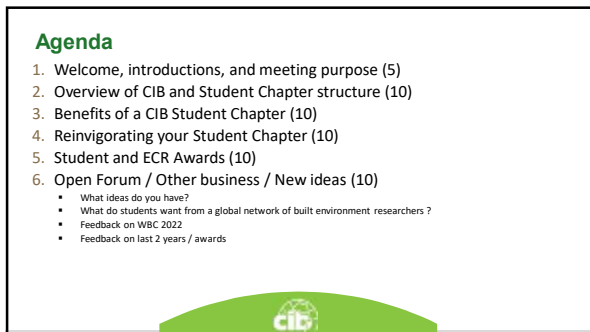
---

---

---

---

---



---

---

---

---

---

---

---

---

### Welcome and Overarching Questions

Why belong to a global built environment research network?

How can that network best serve students?



---

---

---

---

---

---

---

---

### Overview of CIB and Student Chapter structure

#### 1. How to form a student chapter

- A. Associate or Full membership
- B. Contact Mike and Debbie
- C. Include a plan of prospective activities
- D. Include faculty liaison and student leadership (one is fine). We don't require specific title of listing of officers

#### 2. SC/ECR Committee

- A. Led by Prof Srinath Perera, Western Sydney University
- B. Proposes programmes, awards, activities for SC/ECR
- C. Comprised on 2 PhD students, 3 ECRs, 5 senior researchers
- D. The Committee is seeking ways to involve students and ECRs not connected with an Associate or Full Member with active Chapters.
- E. The Committee is looking to rename and restructure how Student Chapters function...
  - » to include ECRs
  - » considering regional networks or hubs
  - » Is "chapters" outdated?
  - » Future Leaders Network? Other?

---

---

---

---

---

---

---

---

### Benefits of a CIB Student Chapter

- 1. Part of a global network for research
  - a. Most universities value global research collaborations in the hiring and promotion processes
  - b. Expanding individual global perspectives
- 2. Gaining and embracing a global perspective
- 3. Student Awards programme
- 4. Leadership opportunities including with CIB

18 student chapters are listed on our website but only 5 responded to our call for a yearly summary for our Annual Report

---

---

---

---

---

---

---

---

**Reinvigorating your CIB Student Chapter**

1. Small activities can be impactful
2. Co-branding events with other groups raises awareness of global collaborations
3. Webinars, on-line meetings
4. Global experts as guest speakers to classes
5. Finding doctoral committee members and external examiners

---

---

---

---

---

---

---

---

**Student and ECR Awards**

1. Keith Hampson Award
2. Sebestyén Future Leaders Award
3. Best Doctoral Research Award
4. Previous awards in 2021 & 2022 and projections for 2023

---

---

---

---

---

---

---

---

**Open Forum**

- What ideas do you have?
- What do students / ECRS desire from the global network of built environment researchers?
- How can CIB better facilitate student engagement?
- Feedback on WBC 2022
- Feedback on last 2 years / awards

---

---

---

---

---

---

---

---

**Thank you and please stay in touch**

Mike Behm, PhD  
CIB Programme Director  
Professor, East Carolina  
University  
[michael.behm@cibworld.org](mailto:michael.behm@cibworld.org)

Debbie Gray  
CIB, Communications &  
Marketing Manger  
[debbie.gray@cibworld.org](mailto:debbie.gray@cibworld.org)



---

---

---

---

---

---

---